



Recording Date: 05/21/2015

Instrument: 39

Book: 9741 Page: 292-311

FILED-RECORDED  
RMC / ROD

2015 May 21 PM 3:28:14

DORCHESTER COUNTY  
SC Deed Rec Fee: .00  
Dor Co Deed Rec Fee: .00  
Filing Fee: 25.00  
Exemption #:  
MARGARET L. BAILEY  
Register of Deeds



THIS PAGE IS HEREBY ATTACHED AND MADE PART OF  
THE PERMANENT RECORD OF THIS DOCUMENT. IT IS  
NOT TO BE DETACHED OR REMOVED AND MUST BE  
CITED AS THE FIRST PAGE OF THE RECORDED  
DOCUMENT. THE TOP OF THE PAGE IS TO BE USED FOR  
RECORDING PURPOSES AND IS NOT TO BE USED FOR  
ANY OTHER PURPOSE.

REGISTER OF DEEDS  
DORCHESTER COUNTY SOUTH CAROLINA  
MARGARET L. BAILEY, REGISTER  
POST OFFICE BOX 38  
ST. GEORGE, SC 29477  
843-563-0181 or 843-832-0181



Covenant in their entirety, and any reference to any of the Deleted Areas is hereby deleted from Table 2.2 located in Section 2.2(a) of the Covenant and any other portion of the Covenant.

3. In furtherance and not in limitation thereof, the legal descriptions provided on the attached Exhibit "A" shall replace in their entirety the legal descriptions of Area D3B Residual and Area D4B Residual contained in Exhibit "A" to the Covenant, and the drawings provided on the attached Exhibit "A-1" shall replace in their entirety the drawings of Area D3B Residual and Area D4B Residual contained in Exhibit "A-1" to the Covenant.

4. Capitalized terms used but not otherwise defined herein shall have the meanings ascribed to such terms in the Covenant.

*(Signatures on the following pages)*



**Signature Pages for the Third Amendment to the Declaration of Covenants, Conditions and Restrictions for the Preservation of the Rural Density of East Edisto**

SIGNED, SEALED AND  
DELIVERED IN THE PRESENCE OF:

*[Signature]*  
*Jarisha Gallo*

DECLARANT:

MWV-CHARLESTON LAND PARTNERS, LLC,  
a Delaware limited liability company

*[Signature]*  
Kenneth T. Seeger, President

FILED/RECORDED  
May 21, 2015  
DORCHESTER COUNTY  
REGISTER OF DEEDS

STATE OF SOUTH CAROLINA    )  
COUNTY OF BERKELEY        )

I, the undersigned Notary Public, do hereby certify that Kenneth T. Seeger, President of MWV-Charleston Land Partners, LLC personally appeared before me this day and acknowledged the due execution of the foregoing instrument.

WITNESS my hand and seal this 21 day of May, 2015

*[Signature]* (L.S.)  
Notary Public for South Carolina  
My Commission expires: 10.27.2018



**Laura E. Sennett**  
**NOTARY PUBLIC**  
**State of South Carolina**  
**My Commission Expires**  
**October 27, 2018**

**Signature Pages for the Third Amendment to the Declaration of Covenants, Conditions  
and Restrictions for the Preservation of the Rural Density of East Edisto**

---

SIGNED, SEALED AND  
DELIVERED IN THE PRESENCE OF:

CONSERVANCY:

EAST EDISTO CONSERVANCY, INC.

By:

*[Signature]*

*[Signature]*

Kenneth T. Seeger, President

*Janeisha Gator*

FILED/RECORDED  
May 21, 2015  
DORCHESTER COUNTY  
REGISTER OF DEEDS

STATE OF SOUTH CAROLINA    )  
COUNTY OF BERKELEY         )

I, the undersigned Notary Public, do hereby certify that Kenneth T. Seeger, President of East Edisto Conservancy, Inc., personally appeared before me this day and acknowledged the due execution of the foregoing instrument.

WITNESS my hand and seal this 21 day of May, 2015

*Laura E. Sennett* (L.S.)  
Notary Public for South Carolina  
My Commission expires: 10-27-2018



**Laura E. Sennett  
NOTARY PUBLIC  
State of South Carolina  
My Commission Expires  
October 27, 2018**

Exhibit "A"

SECTOR D3B RESIDUAL

COMMENCING AT A POINT, SAID POINT BEING AT THE INTERSECTION OF PARKERS FERRY ROAD AND COUNTY LINE ROAD; THENCE DEPARTING SAID POINT AND CONTINUING ON THE FOLLOWING COURSE AND DISTANCE; S84°58'54" E 12722.57' TO THE TRUE POINT OF BEGINNING [N 371,970.67, E 2,201,176.20]; THENCE DEPARTING SAID POINT AND CONTINUING ON THE FOLLOWING COURSES AND DISTANCES:

THENCE N 16°15'37" E 29.37' TO A POINT;  
THENCE N 33°10'43" E 242.69' TO A POINT;  
THENCE N 31°51'58" E 113.45' TO A POINT;  
THENCE N 20°25'50" E 148.74' TO A POINT;  
THENCE N 19°51'23" E 1694.51' TO A POINT;  
THENCE N 19°43'09" W 1300.12' TO A POINT;  
THENCE N 63°32'33" W 315.62' TO A POINT;  
THENCE N 50°19'56" W 69.35' TO A POINT;  
THENCE N 44°37'25" W 700.68' TO A POINT;  
THENCE N 43°05'27" W 221.09' TO A POINT;  
THENCE N 55°40'11" W 193.94' TO A POINT;  
THENCE N 57°37'16" W 702.95' TO A POINT;  
THENCE N 58°03'31" W 1314.78' TO A POINT;  
THENCE N 55°39'40" W 211.62' TO A POINT;  
THENCE N 61°07'58" W 115.97' TO A POINT;  
THENCE N 69°12'21" W 110.03' TO A POINT;  
THENCE N 03°21'59" E 44.35' TO A POINT;  
THENCE N 19°51'19" E 49.84' TO A POINT;  
THENCE N 15°43'55" E 96.05' TO A POINT;  
THENCE N 01°13'08" E 61.21' TO A POINT;  
THENCE N 19°51'19" W 49.84' TO A POINT;  
THENCE N 30°31'47" W 58.95' TO A POINT;  
THENCE N 18°26'06" W 41.18' TO A POINT;  
THENCE N 11°00'13" W 47.75' TO A POINT;  
THENCE N 26°33'54" W 64.05' TO A POINT;  
THENCE N 54°27'44" W 67.21' TO A POINT;  
THENCE N 06°38'43" W 135.02' TO A POINT;  
THENCE N 07°32'58" W 109.02' TO A POINT;  
THENCE N 11°27'44" W 288.30' TO A POINT;  
THENCE N 17°31'32" W 25.94' TO A POINT;  
THENCE N 28°36'38" W 261.04' TO A POINT;  
THENCE N 26°26'57" W 283.58' TO A POINT;  
THENCE N 27°18'53" W 1235.18' TO A POINT;  
THENCE N 03°40'37" E 194.61' TO A POINT;  
THENCE N 01°12'49" E 2983.65' TO A POINT;

THENCE N 20°55'52" W 765.35' TO A POINT;  
THENCE N 35°11'29" W 114.82' TO A POINT;  
THENCE N 42°31'59" W 406.41' TO A POINT;  
THENCE N 53°42'41" W 231.00' TO A POINT;  
THENCE N 16°46'46" W 356.32' TO A POINT;  
THENCE N 11°11'16" E 1436.14' TO A POINT;  
THENCE N 11°38'14" E 580.95' TO A POINT;  
THENCE N 18°14'10" E 237.17' TO A POINT;  
THENCE N 17°48'50" E 493.72' TO A POINT;  
THENCE N 17°28'29" E 658.63' TO A POINT;  
THENCE N 02°57'43" E 0.00' TO A POINT;  
THENCE S 67°22'35" E 305.53' TO A POINT;  
THENCE S 63°18'07" E 351.49' TO A POINT;  
THENCE S 60°58'07" E 436.39' TO A POINT;  
THENCE N 23°58'38" E 361.65' TO A POINT;  
THENCE N 12°36'44" E 726.80' TO A POINT;  
THENCE N 03°02'43" W 719.42' TO A POINT;  
THENCE N 46°25'28" E 753.51' TO A POINT;  
THENCE N 42°57'41" E 131.63' TO A POINT;  
THENCE N 55°18'17" E 100.19' TO A POINT;  
THENCE N 62°31'32" E 178.55' TO A POINT;  
THENCE S 75°25'09" E 115.76' TO A POINT;  
THENCE S 03°00'12" E 1739.59' TO A POINT;  
THENCE S 59°14'14" E 53.04' TO A POINT;  
THENCE S 68°51'33" E 821.34' TO A POINT;  
THENCE S 68°43'51" E 867.46' TO A POINT;  
THENCE S 69°28'32" E 922.26' TO A POINT;  
THENCE S 68°52'04" E 517.67' TO A POINT;  
THENCE N 32°28'16" E 70.74' TO A POINT;  
THENCE N 56°27'08" E 363.24' TO A POINT;  
THENCE N 59°48'01" E 237.28' TO A POINT;  
THENCE N 61°09'02" E 353.06' TO A POINT;  
THENCE N 85°39'24" E 85.97' TO A POINT;  
THENCE N 57°15'16" E 346.80' TO A POINT;  
THENCE S 44°19'41" E 14.66' TO A POINT;  
THENCE S 44°44'45" E 2829.65' TO A POINT;  
THENCE N 45°06'53" E 753.28' TO A POINT;  
THENCE N 45°51'59" E 965.02' TO A POINT;  
THENCE N 45°01'43" E 743.50' TO A POINT;  
THENCE S 42°15'03" E 231.91' TO A POINT;  
THENCE S 80°44'14" E 61.10' TO A POINT;  
THENCE S 48°19'39" E 101.45' TO A POINT;  
THENCE S 56°18'36" E 72.06' TO A POINT;  
THENCE S 53°22'43" E 76.78' TO A POINT;  
THENCE N 45°17'31" E 346.84' TO A POINT;  
THENCE S 46°01'08" E 861.04' TO A POINT;

THENCE S 38°27'13" W 2060.89' TO A POINT;  
THENCE S 45°12'09" E 499.94' TO A POINT;  
THENCE S 44°30'06" E 203.16' TO A POINT;  
THENCE S 39°56'16" W 68.75' TO A POINT;  
THENCE S 43°02'57" E 310.24' TO A POINT;  
THENCE S 42°11'22" E 924.26' TO A POINT;  
THENCE S 50°30'07" E 1639.56' TO A POINT;  
THENCE S 50°01'56" E 323.93' TO A POINT;  
THENCE N 47°31'21" E 1511.88' TO A POINT;  
THENCE N 43°14'31" E 364.67' TO A POINT;  
THENCE S 23°56'16" E 194.98' TO A POINT;  
THENCE S 21°48'05" E 85.21' TO A POINT;  
THENCE S 26°29'55" E 219.76' TO A POINT;  
THENCE S 33°16'04" E 171.38' TO A POINT;  
THENCE S 38°59'08" E 64.02' TO A POINT;  
THENCE S 42°28'14" E 146.77' TO A POINT;  
THENCE S 44°58'31" E 275.68' TO A POINT;  
THENCE S 42°20'33" E 222.80' TO A POINT;  
THENCE S 43°54'04" E 849.80' TO A POINT;  
THENCE S 43°09'52" E 542.44' TO A POINT;  
THENCE S 44°03'30" E 1622.10' TO A POINT;  
THENCE S 36°24'56" E 216.18' TO A POINT;  
THENCE S 30°11'01" E 94.41' TO A POINT;  
THENCE S 22°57'06" E 117.80' TO A POINT;  
THENCE S 20°05'19" E 125.68' TO A POINT;  
THENCE S 14°28'11" E 159.15' TO A POINT;  
THENCE S 10°57'01" E 745.57' TO A POINT;  
THENCE S 10°36'51" E 1280.19' TO A POINT;  
THENCE S 11°00'12" E 820.36' TO A POINT;  
THENCE S 10°38'45" E 986.38' TO A POINT;  
THENCE S 14°12'06" E 197.51' TO A POINT;  
THENCE S 19°05'37" E 137.47' TO A POINT;  
THENCE S 23°59'21" E 182.30' TO A POINT;  
THENCE S 29°07'17" E 111.60' TO A POINT;  
THENCE S 32°24'06" E 197.55' TO A POINT;  
THENCE S 36°29'26" E 1616.70' TO A POINT;  
THENCE S 36°15'44" E 533.83' TO A POINT;  
THENCE S 37°04'20" E 744.83' TO A POINT;  
THENCE S 05°41'43" E 1009.53' TO A POINT;  
THENCE S 84°38'24" W 1061.81' TO A POINT;  
THENCE S 05°44'16" E 1049.55' TO A POINT;  
THENCE N 84°09'15" E 948.46' TO A POINT;  
THENCE S 21°46'23" W 629.39' TO A POINT;  
THENCE S 22°11'56" W 440.74' TO A POINT;  
THENCE N 69°08'42" W 344.20' TO A POINT;  
THENCE N 67°41'35" W 533.77' TO A POINT;



THENCE N 69°00'00" W 402.22' TO A POINT;  
THENCE N 70°21'02" W 384.72' TO A POINT;  
THENCE N 69°13'02" W 385.31' TO A POINT;  
THENCE N 67°09'32" W 410.91' TO A POINT;  
THENCE N 69°23'48" W 154.18' TO A POINT;  
THENCE N 73°14'50" W 222.10' TO A POINT;  
THENCE N 76°24'54" W 135.02' TO A POINT;  
THENCE N 78°56'10" W 265.36' TO A POINT;  
THENCE N 83°30'58" W 214.08' TO A POINT;  
THENCE N 85°38'37" W 146.80' TO A POINT;  
THENCE S 85°06'52" W 767.02' TO A POINT;  
THENCE S 86°02'43" W 625.17' TO A POINT;  
THENCE S 84°57'24" W 849.20' TO A POINT;  
THENCE S 85°38'31" W 428.11' TO A POINT;  
THENCE S 89°27'31" W 128.22' TO A POINT;  
THENCE N 86°26'20" W 159.74' TO A POINT;  
THENCE N 83°35'29" W 204.08' TO A POINT;  
THENCE N 85°25'29" W 732.11' TO A POINT;  
THENCE N 85°00'42" W 975.96' TO A POINT;  
THENCE N 85°16'25" W 646.66' TO A POINT;  
THENCE N 84°47'36" W 284.50' TO A POINT;  
THENCE N 84°18'04" W 335.69' TO A POINT;  
THENCE N 85°09'55" W 584.97' TO A POINT;  
THENCE N 86°03'34" W 942.44' TO A POINT;  
THENCE N 85°23'04" W 545.58' TO A POINT;  
THENCE N 85°37'36" W 578.79' TO A POINT;  
THENCE N 85°17'59" W 752.02' TO A POINT;  
THENCE N 84°59'16" W 652.92' TO A POINT;  
THENCE N 85°14'53" W 1496.64' TO A POINT;  
THENCE N 86°12'00" W 383.46' TO A POINT;  
THENCE N 85°33'45" W 609.47' TO A POINT;  
THENCE N 87°02'17" W 175.77' TO A POINT

BEING THE POINT OF BEGINNING, CONTAINING 5608.70 ACRES OF LAND MORE OR LESS AND EXCEPT THE FOLLOWING TAX PARCELS:

LESS AND EXCEPT TAX MAP PARCELS 184-00-00-002,  
184-00-00-021, 184-00-00-022 AND 184-00-00-028

COMMENCING AT A POINT, SAID POINT BEING THE SOUTHWESTERLY CORNER OF TAX MAP PARCELS 184-00-00-016; THENCE DEPARTING SAID POINT AND RUNNING S 30°49'52" W 995.76' TO THE TRUE POINT OF BEGINNING; THENCE

S 46°29'13" W 249.94' TO A POINT; THENCE  
N 43°29'25" W 410.77' TO A POINT; THENCE  
N 87°53'56" W 370.00' TO A POINT; THENCE

N 02°19'32" E 340.93' TO A POINT; THENCE  
S 87°25'51" E 321.83' TO A POINT; THENCE  
N 08°08'51" W 376.34' TO A POINT; THENCE  
N 53°26'19" E 123.22' TO A POINT; THENCE  
N 85°24'16" E 449.35' TO A POINT; THENCE  
S 16°28'39" E 396.27' TO A POINT; THENCE  
S 10°43'50" W 144.84' TO A POINT; THENCE  
S 10°43'50" W 432.92' TO THE POINT OF BEGINNING, CONTAINING 14.97  
ACRES OF LESS MORE OR LESS.

LESS AND EXCEPT TAX MAP PARCELS 184-00-00-006, 184-00-00-007 AND 184-00-00-029

COMMENCING AT A POINT, SAID POINT BEING THE NORTHWESTERLY CORNER OF TAX MAP PARCEL 184-00-00-003; THENCE DEPARTING SAID POINT AND RUNNING S 13°05'38" E 3766.82' TO THE TRUE POINT OF BEGINNING; THENCE  
S 25°12'21" W 1358.37' TO A POINT; THENCE  
S 77°38'58" W 1934.31' TO A POINT; THENCE  
N 24°42'22" E 750.45' TO A POINT; THENCE  
N 24°39'04" E 457.22' TO A POINT; THENCE  
N 26°20'55" E 690.48' TO A POINT; THENCE  
S 87°28'56" E 511.81' TO A POINT; THENCE  
S 87°22'03" E 507.69' TO A POINT; THENCE  
S 87°32'11" E 639.32' TO THE POINT OF BEGINNING, CONTAINING 57.50  
ACRES OF LAND MORE OR LESS.

LESS AND EXCEPT TAX MAP PARCEL 184-00-00-013

COMMENCING AT A POINT, SAID POINT BEING THE NORTHWESTERLY CORNER OF TAX MAP PARCEL 184-00-00-003; THENCE DEPARTING SAID POINT AND RUNNING S 42°20'09" W 2534.27' TO THE TRUE POINT OF BEGINNING; THENCE  
S 19°51'42" E 463.16' TO A POINT; THENCE  
S 58°18'07" E 223.23' TO A POINT; THENCE  
S 17°02'46" W 514.03' TO A POINT; THENCE  
S 13°20'32" W 315.35' TO A POINT; THENCE  
S 02°55'29" W 336.81' TO A POINT; THENCE  
N 87°33'37" W 181.61' TO A POINT; THENCE  
N 87°44'34" W 488.80' TO A POINT; THENCE  
N 17°40'28" E 325.49' TO A POINT; THENCE  
N 21°36'42" E 693.63' TO A POINT; THENCE  
S 87°11'15" W 201.23' TO A POINT; THENCE  
N 15°00'50" E 760.23' TO A POINT; THENCE  
S 84°56'52" E 213.80' TO THE POINT OF BEGINNING CONTAINING 20.47 ACRES  
OF LAND MORE OR LESS.

FOR A TOTAL SECTOR AREA OF 5,515.76 ACRES.

**SECTOR D4 RESIDUAL**

COMMENCING AT A POINT, SAID POINT BEING THE INTERSECTION OF SOUTHEASTERLY RIGHT-OF-WAY LINE OF DELEMAR HIGHWAY AND CLUBHOUSE ROAD; THENCE DEPARTING SAID INTERSECTION AND CONTINUING N 35°55'22" E 10657.11' TO THE TRUE POINT OF BEGINNING [N 381,134.06, E 2,224,609.54]; THENCE DEPARTING SAID POINT OF BEGINNING AND CONTINUING ON THE FOLLOWING COURSES AND DISTANCES:

THENCE N 27°31'00" E 155.22' TO A POINT;  
THENCE N 62°29'00" W 20.00' TO A POINT;  
THENCE N 27°31'00" E 353.22' TO A POINT;

POINT BEING A POINT OF CURVATURE; THENCE RUNNING ALONG A CURVE TO THE LEFT, AN ARC LENGTH OF 123.82', WITH A RADIUS OF 3340.15', A DELTA ANGLE OF 02°07'26", AND A CHORD BEARING AND DISTANCE OF N 26°27'17" E, 123.81' TO A POINT;

THENCE N 64°36'26" W 5.00' TO A POINT;

POINT BEING A POINT OF CURVATURE, NON-TANGENT; THENCE RUNNING ALONG A CURVE TO THE LEFT, AN ARC LENGTH OF 408.16', WITH A RADIUS OF 3335.15', A DELTA ANGLE OF 07°00'43", AND A CHORD BEARING AND DISTANCE OF N 21°53'12" E, 407.91' TO A POINT;

THENCE S 43°24'26" E 453.31' TO A POINT;  
THENCE S 44°42'37" E 941.43' TO A POINT;  
THENCE S 44°13'37" E 260.36' TO A POINT;  
THENCE S 50°11'40" E 107.68' TO A POINT;  
THENCE S 60°23'44" E 58.67' TO A POINT;  
THENCE S 77°35'42" E 106.41' TO A POINT;  
THENCE S 74°23'15" E 174.28' TO A POINT;  
THENCE S 66°48'04" E 99.29' TO A POINT;  
THENCE S 49°57'48" E 17.14' TO A POINT;  
THENCE S 33°21'59" E 125.38' TO A POINT;  
THENCE S 42°44'32" E 253.11' TO A POINT;  
THENCE S 48°31'00" E 125.69' TO A POINT;  
THENCE N 14°59'42" E 1195.89' TO A POINT;  
THENCE N 03°48'51" W 626.39' TO A POINT;  
THENCE N 37°06'15" E 2037.51' TO A POINT;  
THENCE S 85°59'29" E 1890.36' TO A POINT;  
THENCE N 29°41'26" E 965.93' TO A POINT;  
THENCE N 26°16'45" W 1866.52' TO A POINT;  
THENCE N 69°22'02" W 752.74' TO A POINT;  
THENCE N 30°06'23" W 845.31' TO A POINT;

THENCE N 55°08'27" W 613.57' TO A POINT;  
THENCE N 66°45'00" W 1717.26' TO A POINT;  
THENCE S 75°45'47" W 136.66' TO A POINT;

POINT BEING A POINT OF CURVATURE, NON-TANGENT; THENCE RUNNING  
ALONG A CURVE TO THE RIGHT, AN ARC LENGTH OF 438.61', WITH A RADIUS OF  
1859.86', A DELTA ANGLE OF 13°30'43", AND A CHORD BEARING AND DISTANCE OF  
N 30°44'00" E, 437.59' TO A POINT;

POINT BEING A POINT OF COMPOUND CURVATURE; THENCE RUNNING ALONG A  
CURVE TO THE RIGHT, AN ARC LENGTH OF 57.07', WITH A RADIUS OF 1399.39', A  
DELTA ANGLE OF 02°20'12", AND A CHORD BEARING AND DISTANCE OF N  
43°38'42" E, 57.07' TO A POINT;

THENCE N 44°48'48" E 1011.25' TO A POINT;  
THENCE S 45°11'12" E 42.00' TO A POINT;  
THENCE N 44°48'48" E 178.95' TO A POINT;  
THENCE N 45°11'12" W 42.00' TO A POINT;  
THENCE N 44°48'48" E 331.05' TO A POINT;  
THENCE S 45°11'09" E 11.01' TO A POINT;  
THENCE N 44°48'51" E 250.00' TO A POINT;  
THENCE N 45°11'09" W 11.01' TO A POINT;  
THENCE N 44°48'48" E 2435.00' TO A POINT;  
THENCE S 45°11'09" E 42.00' TO A POINT;  
THENCE N 44°48'48" E 178.00' TO A POINT;  
THENCE N 45°11'09" W 42.01' TO A POINT;  
THENCE N 44°48'51" E 307.25' TO A POINT;  
THENCE S 44°51'56" E 1423.29' TO A POINT;  
THENCE S 46°04'31" E 638.52' TO A POINT;  
THENCE S 46°40'48" E 492.57' TO A POINT;  
THENCE S 18°01'34" E 286.42' TO A POINT;  
THENCE S 29°57'20" E 360.73' TO A POINT;  
THENCE S 29°20'42" E 367.97' TO A POINT;  
THENCE S 31°37'44" E 496.96' TO A POINT;  
THENCE S 32°31'18" E 4506.02' TO A POINT;  
THENCE S 36°20'35" E 624.36' TO A POINT;  
THENCE S 28°50'35" E 304.92' TO A POINT;  
THENCE S 12°40'35" E 718.74' TO A POINT;  
THENCE S 34°44'25" W 216.48' TO A POINT;  
THENCE S 39°13'35" E 559.02' TO A POINT;  
THENCE S 10°49'25" W 726.00' TO A POINT;  
THENCE S 55°50'35" E 2237.19' TO A POINT;  
THENCE S 33°34'25" W 418.88' TO A POINT;  
THENCE S 46°32'34" E 1496.34' TO A POINT;  
THENCE S 69°06'32" E 504.58' TO A POINT;  
THENCE N 80°45'28" E 312.18' TO A POINT;

THENCE S 79°14'32" E 2437.90' TO A POINT;  
THENCE S 29°44'42" W 206.05' TO A POINT;  
THENCE S 31°22'42" W 316.91' TO A POINT;  
THENCE S 31°10'29" W 345.50' TO A POINT;  
THENCE S 32°02'05" W 54.27' TO A POINT;

POINT BEING A POINT OF CURVATURE; THENCE RUNNING ALONG A CURVE TO THE RIGHT, AN ARC LENGTH OF 71.74', WITH A RADIUS OF 100.00', A DELTA ANGLE OF 41°06'12", AND A CHORD BEARING AND DISTANCE OF S 52°35'10" W, 70.21' TO A POINT;

THENCE S 73°08'16" W 573.86' TO A POINT;  
THENCE S 73°41'30" W 206.42' TO A POINT;  
THENCE S 73°20'57" W 1129.89' TO A POINT;  
THENCE S 73°25'11" W 1065.94' TO A POINT;

POINT BEING A POINT OF CURVATURE; THENCE RUNNING ALONG A CURVE TO THE RIGHT, AN ARC LENGTH OF 222.61' WITH A RADIUS OF 2000.00', A DELTA ANGLE OF 06°22'38", AND A CHORD BEARING AND DISTANCE OF S 76°36'30" W, 222.49' TO A POINT;

THENCE S 79°47'49" W 500.78' TO A POINT;  
THENCE S 79°24'01" W 457.28' TO A POINT;

POINT BEING A POINT OF CURVATURE; THENCE RUNNING ALONG A CURVE TO THE RIGHT, AN ARC LENGTH OF 211.00' WITH A RADIUS OF 275.00', A DELTA ANGLE OF 43°57'43", AND A CHORD BEARING AND DISTANCE OF N 78°37'08" W, 205.86' TO A POINT;

THENCE N 56°38'16" W 598.04' TO A POINT;  
THENCE N 55°50'18" W 687.84' TO A POINT;  
THENCE N 56°27'31" W 139.38' TO A POINT;  
THENCE S 37°32'36" W 1348.14' TO A POINT;  
THENCE S 36°30'06" W 1169.06' TO A POINT;  
THENCE S 05°10'26" E 1274.38' TO A POINT;  
THENCE N 71°07'18" W 605.67' TO A POINT;  
THENCE N 18°36'10" W 45.01' TO A POINT;  
THENCE S 16°47'16" W 459.31' TO A POINT;  
THENCE S 16°06'56" W 551.69' TO A POINT;  
THENCE S 07°40'29" W 133.29' TO A POINT;  
THENCE S 01°35'47" W 263.46' TO A POINT;  
THENCE S 01°39'39" E 213.39' TO A POINT;  
THENCE S 04°24'51" W 138.24' TO A POINT;  
THENCE S 07°07'25" W 36.37' TO A POINT;  
THENCE S 49°28'11" E 74.48' TO A POINT;  
THENCE S 63°35'31" E 55.24' TO A POINT;



THENCE S 43°07'39" E 987.88' TO A POINT;  
THENCE S 43°49'05" E 255.89' TO A POINT;  
THENCE S 41°19'46" E 67.72' TO A POINT;  
THENCE S 42°53'58" E 1512.79' TO A POINT;  
THENCE S 60°52'59" W 1052.39' TO A POINT;  
THENCE S 08°41'38" E 179.26' TO A POINT;  
THENCE S 81°03'00" W 1635.56' TO A POINT;  
THENCE S 81°42'48" W 1209.14' TO A POINT;  
THENCE S 81°23'47" W 592.92' TO A POINT;  
THENCE N 08°12'28" W 656.46' TO A POINT;  
THENCE N 02°27'38" W 262.77' TO A POINT;  
THENCE N 22°20'43" E 272.33' TO A POINT;  
THENCE N 26°13'12" W 177.40' TO A POINT;  
THENCE N 29°49'46" W 209.92' TO A POINT;  
THENCE N 43°49'13" W 139.84' TO A POINT;  
THENCE N 09°22'07" W 902.98' TO A POINT;  
THENCE N 00°10'48" E 437.28' TO A POINT;  
THENCE N 80°26'18" W 705.81' TO A POINT;  
THENCE S 06°23'25" W 2598.02' TO A POINT;  
THENCE N 51°44'50" W 478.08' TO A POINT;  
THENCE N 51°15'08" W 196.73' TO A POINT;  
THENCE N 48°19'34" W 801.88' TO A POINT;  
THENCE N 40°08'02" W 1459.18' TO A POINT;  
THENCE N 39°34'14" W 778.97' TO A POINT;  
THENCE N 38°44'41" W 695.20' TO A POINT;  
THENCE N 36°06'10" W 337.41' TO A POINT;  
THENCE N 15°52'59" W 389.51' TO A POINT;  
THENCE N 14°03'38" E 1733.84' TO A POINT;  
THENCE N 16°06'04" E 49.53' TO A POINT;  
THENCE S 86°16'49" E 1324.67' TO A POINT;  
THENCE N 15°37'31" W 303.25' TO A POINT;  
THENCE N 16°46'41" E 182.52' TO A POINT;  
THENCE S 75°54'38" E 94.31' TO A POINT;  
THENCE N 34°58'35" E 2169.96' TO A POINT;  
THENCE N 55°32'55" W 8.82' TO A POINT;

POINT BEING A POINT OF CURVATURE, NON-TANGENT; THENCE RUNNING  
ALONG A CURVE TO THE RIGHT, AN ARC LENGTH OF 101.09', WITH A RADIUS OF  
740.71', A DELTA ANGLE OF 07°49'11", AND A CHORD BEARING AND DISTANCE OF  
N 59°26'09" W, 101.01' TO A POINT;

THENCE N 55°31'34" W 372.34' TO A POINT;  
THENCE N 53°52'51" W 230.50' TO A POINT;  
THENCE N 54°17'53" W 490.56' TO A POINT;  
THENCE N 54°34'13" W 248.50' TO A POINT;  
THENCE N 55°59'35" W 353.52' TO A POINT;

THENCE N 55°43'38" W 256.17' TO A POINT;  
THENCE N 55°06'55" W 250.00' TO A POINT;  
THENCE N 56°07'09" W 195.58' TO A POINT;  
THENCE N 56°17'07" W 183.33' TO A POINT;  
THENCE N 56°00'08" W 695.06' TO A POINT;  
THENCE N 56°51'39" W 415.64' TO A POINT;  
THENCE N 56°27'19" W 125.96' TO A POINT;

POINT BEING A POINT OF CURVATURE; THENCE RUNNING ALONG A CURVE TO THE RIGHT, AN ARC LENGTH OF 84.12', WITH A RADIUS OF 251.66', A DELTA ANGLE OF 19°09'05", AND A CHORD BEARING AND DISTANCE OF N 46°52'47" W, 83.73' TO A POINT;

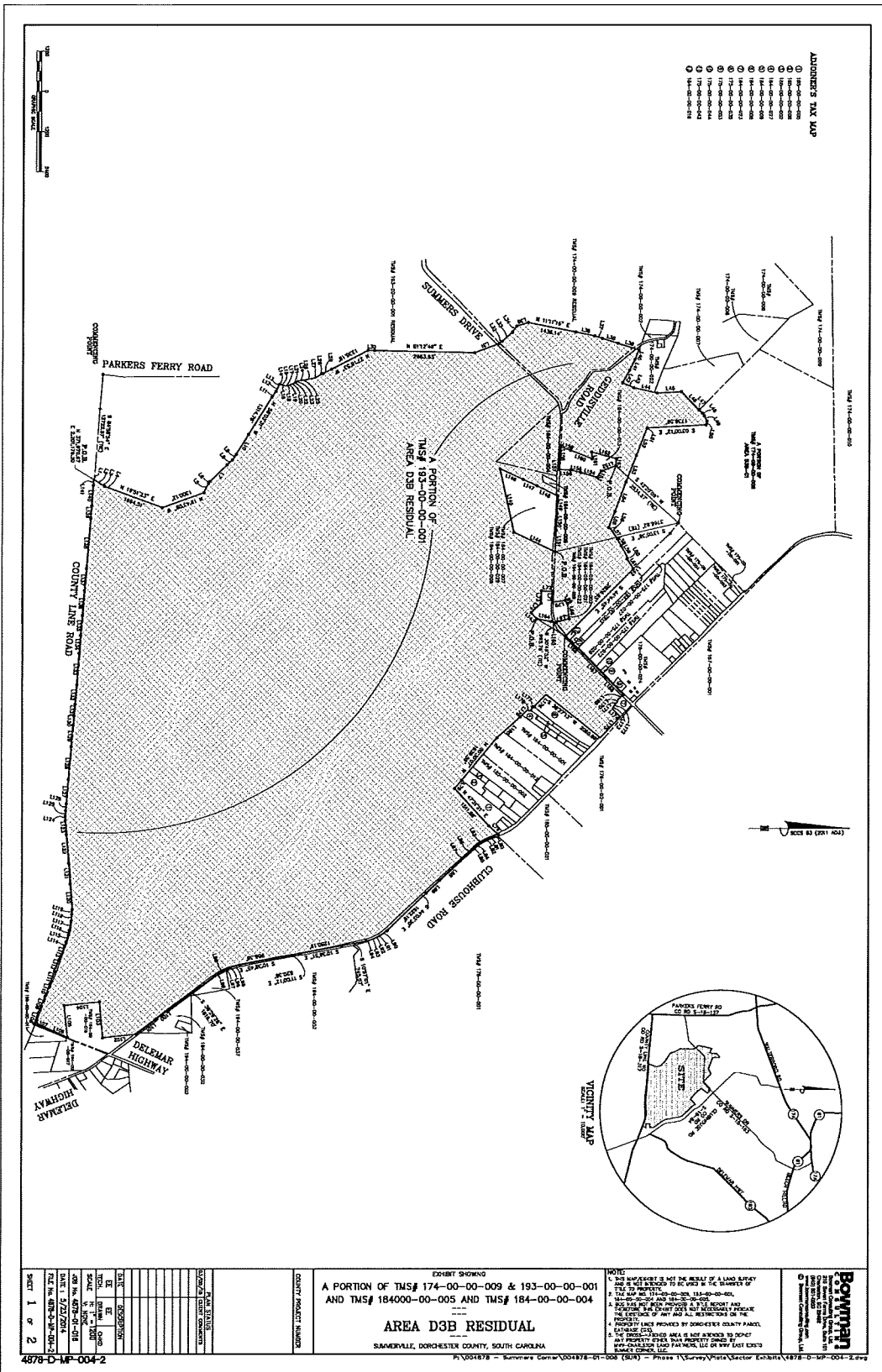
THENCE N 37°18'15" W 109.06' TO A POINT;  
THENCE N 38°39'35" W 164.85' TO A POINT;

POINT BEING A POINT OF CURVATURE; THENCE RUNNING ALONG A CURVE TO THE LEFT, AN ARC LENGTH OF 54.11', WITH A RADIUS OF 124.44', A DELTA ANGLE OF 24°54'49", AND A CHORD BEARING AND DISTANCE OF N 51°07'00" W, 53.68' TO A POINT;

THENCE N 63°34'24" W 71.35' TO A POINT;  
THENCE N 65°56'59" W 266.99' TO A POINT;  
THENCE N 65°45'26" W 703.65' TO A POINT;  
THENCE N 65°16'02" W 350.86' TO A POINT;  
THENCE N 66°04'15" W 388.81' TO A POINT THE POINT OF BEGINNING,  
CONTAINING 3387.88 ACRES OF LAND MORE OR LESS.

**Exhibit “A-1”**

*See Attached*



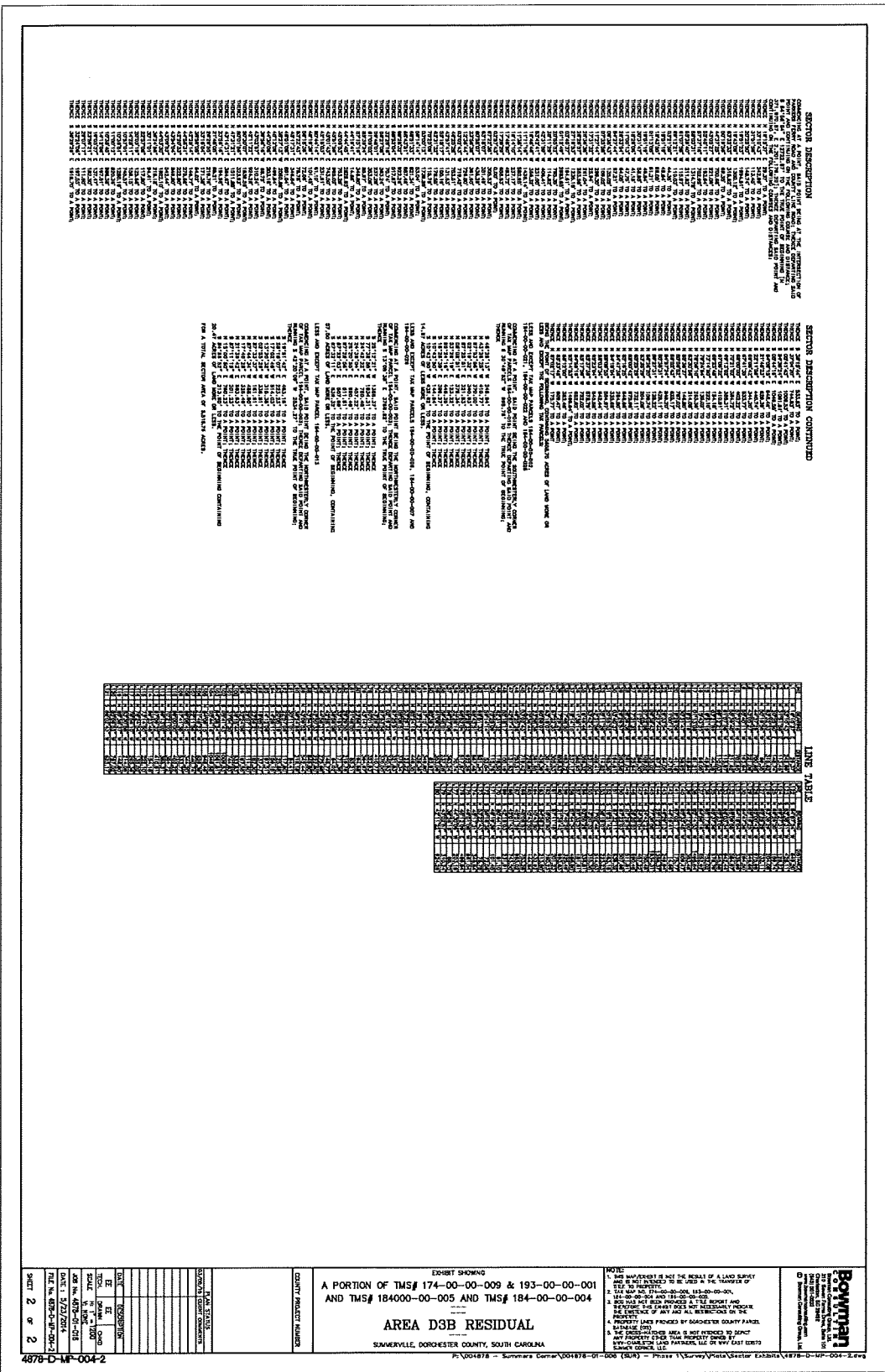
- ADJOURNING TAX MAP**
- ① 184-00-00-001
  - ② 184-00-00-002
  - ③ 184-00-00-003
  - ④ 184-00-00-004
  - ⑤ 184-00-00-005
  - ⑥ 184-00-00-006
  - ⑦ 184-00-00-007
  - ⑧ 184-00-00-008
  - ⑨ 184-00-00-009
  - ⑩ 184-00-00-010
  - ⑪ 184-00-00-011
  - ⑫ 184-00-00-012
  - ⑬ 184-00-00-013
  - ⑭ 184-00-00-014
  - ⑮ 184-00-00-015
  - ⑯ 184-00-00-016
  - ⑰ 184-00-00-017
  - ⑱ 184-00-00-018
  - ⑲ 184-00-00-019
  - ⑳ 184-00-00-020

**EXHIBIT SHOWING**  
 A PORTION OF TMS# 174-00-00-009 & 193-00-00-001  
 AND TMS# 184000-00-005 AND TMS# 184-00-00-004  
 AREA D3B RESIDUAL  
 SUMMERVILLE, DORCHESTER COUNTY, SOUTH CAROLINA

**NOTE**  
 1. THIS INSTRUMENT IS NOT THE RESULT OF A LAND SURVEY  
 2. THE SURVEYOR HAS NOT BEEN REQUIRED TO RE-EXAMINE THE BOUNDARIES OF THE  
 3. THE LAND DESCRIBED IN THIS REPORT AND  
 4. THE SURVEYOR HAS BEEN ADVISED BY THE ADJOURNING PARTIES OF THE  
 5. THE SURVEYOR HAS BEEN ADVISED OF ANY AND ALL RESTRICTIONS ON THE  
 6. THE SURVEYOR HAS BEEN ADVISED OF ANY AND ALL EASEMENTS ON THE  
 7. THE SURVEYOR HAS BEEN ADVISED OF ANY AND ALL ENCUMBRANCES ON THE  
 8. THE SURVEYOR HAS BEEN ADVISED OF ANY AND ALL LIENS ON THE  
 9. THE SURVEYOR HAS BEEN ADVISED OF ANY AND ALL OTHER MATTERS WHICH  
 10. THE SURVEYOR HAS BEEN ADVISED OF ANY AND ALL OTHER MATTERS WHICH

DATE OF SURVEY	05/11/2017
SCALE	1" = 100'
DATE OF PLOTTING	05/11/2017
DATE OF RECORDING	05/11/2017
TITLE	AREA D3B RESIDUAL
SHEET	1 OF 2

**Bowman**  
 Surveyors & Engineers, Inc.  
 1010 North Main Street  
 Charleston, South Carolina 29401  
 Phone: 843.739.1234  
 Fax: 843.739.1235  
 www.bowmansurveyors.com



**SECTION DESCRIPTION**  
 SECTION DESCRIPTION CONTINUED

THIS REPORT IS THE RESULT OF A LAND SURVEY MADE BY THE SURVEYOR AND THE PROPERTY IS NOT TO BE USED AS THE BASIS OF TITLE TO PROPERTY.

1. THE LAND HAS BEEN PRODUCED IN THE REPORT AND BEFORE THE FIRST FIELD INSPECTION OF THE PROPERTY BY THE SURVEYOR AND ALL INSTRUMENTS ON THE PROPERTY HAVE BEEN CHECKED BY THE SURVEYOR.

2. THE SURVEYOR HAS BEEN ADVISED BY THE OWNER THAT THE PROPERTY IS NOT SUBJECT TO ANY EASEMENTS OR INTERESTS IN THE PROPERTY.

3. THE SURVEYOR HAS BEEN ADVISED BY THE OWNER THAT THE PROPERTY IS NOT SUBJECT TO ANY EASEMENTS OR INTERESTS IN THE PROPERTY.

4. THE SURVEYOR HAS BEEN ADVISED BY THE OWNER THAT THE PROPERTY IS NOT SUBJECT TO ANY EASEMENTS OR INTERESTS IN THE PROPERTY.

5. THE SURVEYOR HAS BEEN ADVISED BY THE OWNER THAT THE PROPERTY IS NOT SUBJECT TO ANY EASEMENTS OR INTERESTS IN THE PROPERTY.

6. THE SURVEYOR HAS BEEN ADVISED BY THE OWNER THAT THE PROPERTY IS NOT SUBJECT TO ANY EASEMENTS OR INTERESTS IN THE PROPERTY.

7. THE SURVEYOR HAS BEEN ADVISED BY THE OWNER THAT THE PROPERTY IS NOT SUBJECT TO ANY EASEMENTS OR INTERESTS IN THE PROPERTY.

8. THE SURVEYOR HAS BEEN ADVISED BY THE OWNER THAT THE PROPERTY IS NOT SUBJECT TO ANY EASEMENTS OR INTERESTS IN THE PROPERTY.

9. THE SURVEYOR HAS BEEN ADVISED BY THE OWNER THAT THE PROPERTY IS NOT SUBJECT TO ANY EASEMENTS OR INTERESTS IN THE PROPERTY.

10. THE SURVEYOR HAS BEEN ADVISED BY THE OWNER THAT THE PROPERTY IS NOT SUBJECT TO ANY EASEMENTS OR INTERESTS IN THE PROPERTY.

**SECTION DESCRIPTION CONTINUED**

THIS REPORT IS THE RESULT OF A LAND SURVEY MADE BY THE SURVEYOR AND THE PROPERTY IS NOT TO BE USED AS THE BASIS OF TITLE TO PROPERTY.

11. THE SURVEYOR HAS BEEN ADVISED BY THE OWNER THAT THE PROPERTY IS NOT SUBJECT TO ANY EASEMENTS OR INTERESTS IN THE PROPERTY.

12. THE SURVEYOR HAS BEEN ADVISED BY THE OWNER THAT THE PROPERTY IS NOT SUBJECT TO ANY EASEMENTS OR INTERESTS IN THE PROPERTY.

13. THE SURVEYOR HAS BEEN ADVISED BY THE OWNER THAT THE PROPERTY IS NOT SUBJECT TO ANY EASEMENTS OR INTERESTS IN THE PROPERTY.

14. THE SURVEYOR HAS BEEN ADVISED BY THE OWNER THAT THE PROPERTY IS NOT SUBJECT TO ANY EASEMENTS OR INTERESTS IN THE PROPERTY.

15. THE SURVEYOR HAS BEEN ADVISED BY THE OWNER THAT THE PROPERTY IS NOT SUBJECT TO ANY EASEMENTS OR INTERESTS IN THE PROPERTY.

16. THE SURVEYOR HAS BEEN ADVISED BY THE OWNER THAT THE PROPERTY IS NOT SUBJECT TO ANY EASEMENTS OR INTERESTS IN THE PROPERTY.

17. THE SURVEYOR HAS BEEN ADVISED BY THE OWNER THAT THE PROPERTY IS NOT SUBJECT TO ANY EASEMENTS OR INTERESTS IN THE PROPERTY.

18. THE SURVEYOR HAS BEEN ADVISED BY THE OWNER THAT THE PROPERTY IS NOT SUBJECT TO ANY EASEMENTS OR INTERESTS IN THE PROPERTY.

19. THE SURVEYOR HAS BEEN ADVISED BY THE OWNER THAT THE PROPERTY IS NOT SUBJECT TO ANY EASEMENTS OR INTERESTS IN THE PROPERTY.

20. THE SURVEYOR HAS BEEN ADVISED BY THE OWNER THAT THE PROPERTY IS NOT SUBJECT TO ANY EASEMENTS OR INTERESTS IN THE PROPERTY.

21. THE SURVEYOR HAS BEEN ADVISED BY THE OWNER THAT THE PROPERTY IS NOT SUBJECT TO ANY EASEMENTS OR INTERESTS IN THE PROPERTY.

22. THE SURVEYOR HAS BEEN ADVISED BY THE OWNER THAT THE PROPERTY IS NOT SUBJECT TO ANY EASEMENTS OR INTERESTS IN THE PROPERTY.

23. THE SURVEYOR HAS BEEN ADVISED BY THE OWNER THAT THE PROPERTY IS NOT SUBJECT TO ANY EASEMENTS OR INTERESTS IN THE PROPERTY.

24. THE SURVEYOR HAS BEEN ADVISED BY THE OWNER THAT THE PROPERTY IS NOT SUBJECT TO ANY EASEMENTS OR INTERESTS IN THE PROPERTY.

25. THE SURVEYOR HAS BEEN ADVISED BY THE OWNER THAT THE PROPERTY IS NOT SUBJECT TO ANY EASEMENTS OR INTERESTS IN THE PROPERTY.

26. THE SURVEYOR HAS BEEN ADVISED BY THE OWNER THAT THE PROPERTY IS NOT SUBJECT TO ANY EASEMENTS OR INTERESTS IN THE PROPERTY.

27. THE SURVEYOR HAS BEEN ADVISED BY THE OWNER THAT THE PROPERTY IS NOT SUBJECT TO ANY EASEMENTS OR INTERESTS IN THE PROPERTY.

28. THE SURVEYOR HAS BEEN ADVISED BY THE OWNER THAT THE PROPERTY IS NOT SUBJECT TO ANY EASEMENTS OR INTERESTS IN THE PROPERTY.

29. THE SURVEYOR HAS BEEN ADVISED BY THE OWNER THAT THE PROPERTY IS NOT SUBJECT TO ANY EASEMENTS OR INTERESTS IN THE PROPERTY.

30. THE SURVEYOR HAS BEEN ADVISED BY THE OWNER THAT THE PROPERTY IS NOT SUBJECT TO ANY EASEMENTS OR INTERESTS IN THE PROPERTY.

**LINE TABLES**

LINE	BEARING	DISTANCE	REMARKS
1	N 89° 15' 00" E	100.00	TO CORNER
2	S 89° 15' 00" W	100.00	TO CORNER
3	S 00° 00' 00" W	100.00	TO CORNER
4	N 89° 15' 00" E	100.00	TO CORNER

**NOTE**

1. THIS REPORT IS THE RESULT OF A LAND SURVEY MADE BY THE SURVEYOR AND THE PROPERTY IS NOT TO BE USED AS THE BASIS OF TITLE TO PROPERTY.

2. THE LAND HAS BEEN PRODUCED IN THE REPORT AND BEFORE THE FIRST FIELD INSPECTION OF THE PROPERTY BY THE SURVEYOR AND ALL INSTRUMENTS ON THE PROPERTY HAVE BEEN CHECKED BY THE SURVEYOR.

3. THE SURVEYOR HAS BEEN ADVISED BY THE OWNER THAT THE PROPERTY IS NOT SUBJECT TO ANY EASEMENTS OR INTERESTS IN THE PROPERTY.

4. THE SURVEYOR HAS BEEN ADVISED BY THE OWNER THAT THE PROPERTY IS NOT SUBJECT TO ANY EASEMENTS OR INTERESTS IN THE PROPERTY.

5. THE SURVEYOR HAS BEEN ADVISED BY THE OWNER THAT THE PROPERTY IS NOT SUBJECT TO ANY EASEMENTS OR INTERESTS IN THE PROPERTY.

6. THE SURVEYOR HAS BEEN ADVISED BY THE OWNER THAT THE PROPERTY IS NOT SUBJECT TO ANY EASEMENTS OR INTERESTS IN THE PROPERTY.

7. THE SURVEYOR HAS BEEN ADVISED BY THE OWNER THAT THE PROPERTY IS NOT SUBJECT TO ANY EASEMENTS OR INTERESTS IN THE PROPERTY.

8. THE SURVEYOR HAS BEEN ADVISED BY THE OWNER THAT THE PROPERTY IS NOT SUBJECT TO ANY EASEMENTS OR INTERESTS IN THE PROPERTY.

9. THE SURVEYOR HAS BEEN ADVISED BY THE OWNER THAT THE PROPERTY IS NOT SUBJECT TO ANY EASEMENTS OR INTERESTS IN THE PROPERTY.

10. THE SURVEYOR HAS BEEN ADVISED BY THE OWNER THAT THE PROPERTY IS NOT SUBJECT TO ANY EASEMENTS OR INTERESTS IN THE PROPERTY.

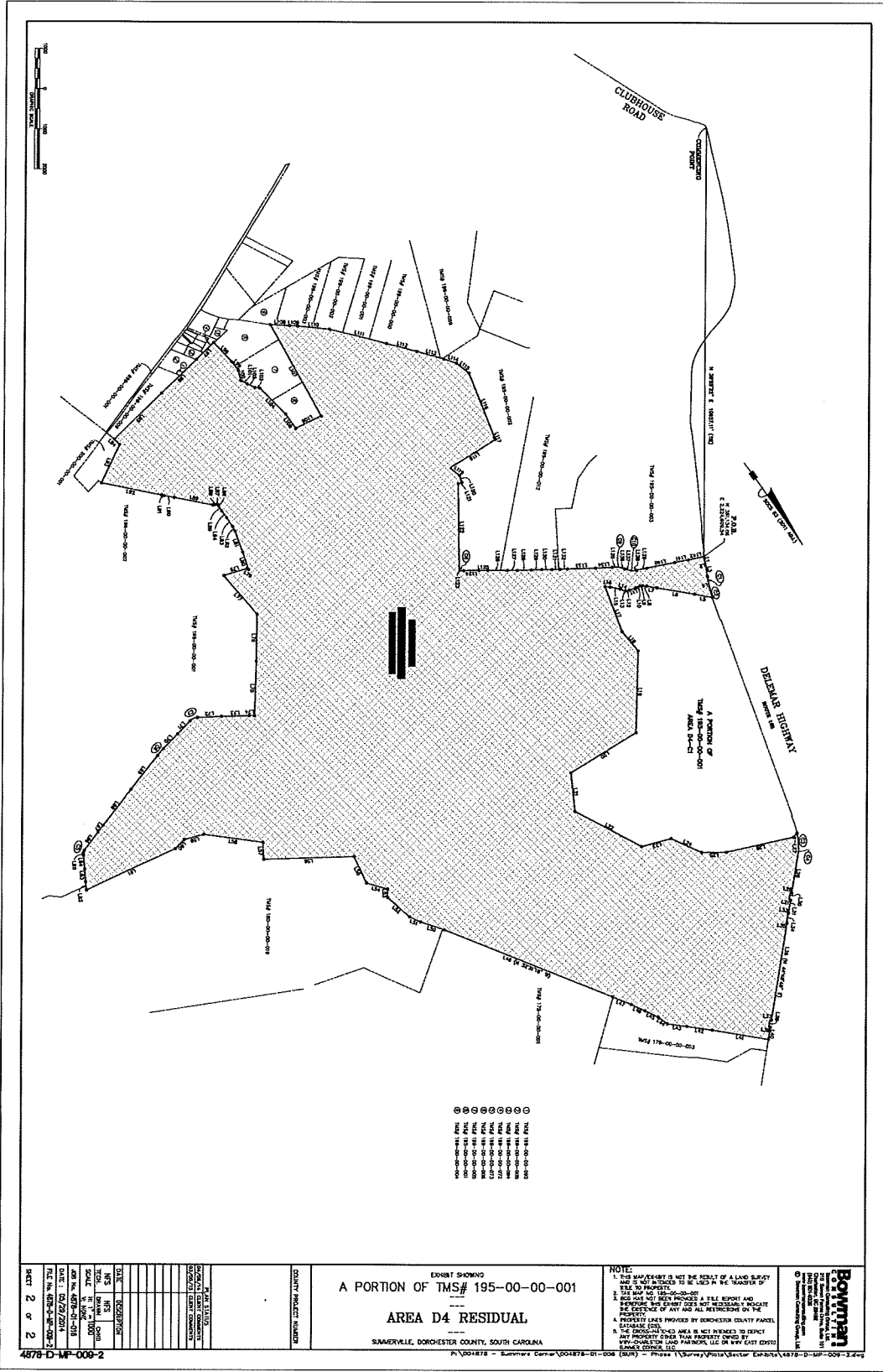
**Boyman**  
 Surveying & Mapping, LLC  
 1111 S. 1st Street  
 Summerville, SC 29586  
 Phone: 803.781.1111  
 Fax: 803.781.1112  
 Email: info@boyman-survey.com  
 Website: www.boyman-survey.com

EXHIBIT SHOWING  
 A PORTION OF TMS# 174-00-00-009 & 193-00-00-001  
 AND TMS# 184000-00-005 AND TMS# 184-00-00-004  
 AREA D3B RESIDUAL  
 SUMMERVILLE, DORCHESTER COUNTY, SOUTH CAROLINA

DATE: 5/20/2014  
 TIME: 11:00 AM  
 SHEET 2 OF 2







DATE	DESCRIPTION
11/15/2011	PRELIMINARY
11/15/2011	FINAL

DATE	DESCRIPTION
11/15/2011	PRELIMINARY
11/15/2011	FINAL

EXHIBIT SHOWING  
 A PORTION OF TMS# 195-00-00-001  
 AREA D4 RESIDUAL  
 SUMMERVILLE, DORCHESTER COUNTY, SOUTH CAROLINA

**NOTE:**  
 1. THIS MAP/EXHIBIT IS NOT THE RESULT OF A LAND SURVEY AND SHOULD BE USED ONLY AS A GUIDE TO THE LOCATION OF THE PROPERTY.  
 2. THIS MAP/EXHIBIT HAS NOT BEEN PROVIDED AS A FILE REPORT AND DOES NOT CONSTITUTE A PROFESSIONAL ENGINEERING OR SURVEYING SERVICE. ANY AND ALL RESTRICTIONS OF THE PROPERTY (AS PROVIDED BY DORCHESTER COUNTY PARCEL DATABASE) SHALL APPLY.  
 3. THE PROPERTY OWNED AREA IS NOT INTENDED TO DEPICT ANY PROPERTY OTHER THAN PARCELS OWNED BY 899-CHARLESTON LAND PARTNERS, LLC OR 899 EAST EIGHTY-9 SQUARE CAPITAL, LLC.

**Boyer**  
 1111 Highway 171  
 Summerville, SC 29486  
 Phone: 803.791.1111  
 Fax: 803.791.1112  
 www.boyer.com