



Recording Date: 12/05/2014

Instrument: 33

Book: 9536 Page: 1-38

FILED-RECORDED

RMC / ROD

2014 Dec 05 AM 8:47:57

DORCHESTER COUNTY

SC Deed Rec Fee: .00

Dor Co Deed Rec Fee: .00

Filing Fee: 43.00

Exemption #:

MARGARET L. BAILEY

Register of Deeds



THIS PAGE IS HEREBY ATTACHED AND MADE PART OF  
THE PERMANENT RECORD OF THIS DOCUMENT. IT IS  
NOT TO BE DETACHED OR REMOVED AND MUST BE  
CITED AS THE FIRST PAGE OF THE RECORDED  
DOCUMENT. THE TOP OF THE PAGE IS TO BE USED FOR  
RECORDING PURPOSES AND IS NOT TO BE USED FOR  
ANY OTHER PURPOSE.

REGISTER OF DEEDS  
DORCHESTER COUNTY SOUTH CAROLINA  
MARGARET L. BAILEY, REGISTER  
POST OFFICE BOX 38  
ST. GEORGE, SC 29477  
843-563-0181 or 843-832-0181

After Recording, Return To:  
Nelson Mullins Riley & Scarborough LLP  
P.O. Box 1806  
Charleston, SC 29402

FILED/RECORDED  
December 5, 2014  
DORCHESTER COUNTY  
REGISTER OF DEEDS

43-

STATE OF SOUTH CAROLINA	)	SECOND AMENDMENT TO THE
	)	DECLARATION OF COVENANTS,
	)	CONDITIONS AND RESTRICTIONS
COUNTY OF DORCHESTER	)	FOR THE PRESERVATION OF THE
	)	RURAL DENSITY OF EAST EDISTO

THIS SECOND AMENDMENT TO THE DECLARATION OF COVENANTS, CONDITIONS AND RESTRICTIONS FOR THE PRESERVATION OF THE RURAL DENSITY OF EAST EDISTO (the "Amendment") is made as of this 4th day of ~~October~~, DECEMBER 2014, upon the affirmative vote in favor thereof by the East Edisto Conservancy, Inc., (the "Conservancy"), with the consent of MWV-Charleston Land Partners, LLC, a Delaware limited liability company (together with its successors, and assigns "Declarant") and those Owners (as defined below) that have joined in execution of this Amendment.

WITNESSETH

WHEREAS, the Declaration of Covenants, Conditions and Restrictions for the Preservation of the Rural Density of East Edisto dated June 27, 2014, was recorded June 27, 2014, in Book 9333, Page 74-149 of the Office of the Register of Deeds of Dorchester County, South Carolina (the "Register"), and amended by the First Amendment to the Declaration of Covenants, Conditions and Restrictions for the Preservation of the Rural Density of East Edisto dated October 1, 2014 and recorded October 2, 2014 in Book 9456, Page 264 in the Registry (as amended, the "Covenant"); and

WHEREAS, the Covenant may be amended by the Conservancy in accordance with Section 6.2 thereof and the Covenant, as amended, shall burden the Property, run with the title to the Property in perpetuity and be binding upon Declarant, and the current and future persons that hold record title to any portion of the Property (each, an "Owner" and collectively the "Owners"), their respective heirs, successors, successors-in-title, and assigns, and any other person or entity that now or hereafter holds any legal, equitable or beneficial interest in any portion of the Property.

WHEREAS, Conservancy, with the consent of Declarant, now desires to amend the Covenant.

NOW, THEREFORE, the Covenant shall hereby be amended as follows:

1. With respect only to the various Areas identified below, the germane portions of Exhibit "A" and Exhibit "A-1" to the Covenant are hereby deleted in their entirety and replaced with Exhibit "A(2)" and Exhibit "A-1(2)", respectively, attached hereto. Any Areas identified below and not previously contemplated in the Covenant are described and depicted on Exhibit "A(2)" and Exhibit "A-1(2)", respectively, attached hereto. The affected Areas are as follows: Area D3A, Area D3A-C1, Area D3A Residual, Area D3C, Area D3C-C1, Area D3C Residual, Area D4-C1, and Area D4. For avoidance of confusion, Areas D3A, D3C, D4-C1 and D4 Residual are amended hereby and Areas D3A-C1, D3A Residual, D3C-C1 and D3C Residual are created hereby.

2. Table 2.2 located in Section 2.2(a) of the Covenant is deleted in its entirety and replaced with Amended Table 2.2 below. The Density Ratio for each Area listed in Amended Table 2.2 below is amended accordingly as provided in Amended Table 2.2. All references to Table 2.2 in the Covenant shall be deemed to mean and interpreted as referring to Amended Table 2.2 below.

<b>Amended Table 2.2. Allocation of Residential Dwelling Units to Areas</b>	
<b>Area</b> (as depicted on Area Maps attached as Exhibit "A-1" as may be modified by Exhibit "A-1(2)")	<b>Density Ratio</b> (Number of Residential Dwelling Units per gross acre of Area)
D1	1/200
D2	1/50
D3A <sup>1</sup>	No per acre ratio; see ratios for Area D3A-C1 and Area D3A Residual
D3A-C1	No per acre ratio; Area D3A-C1 shall have an aggregate number of Residential Dwelling Units based on the following formula.  Maximum number of Residential Dwelling Units that could be developed in Area D3A-C1 and Area D3A Residual, at a 1/4 ratio minus Maximum number of Residential Dwelling Units that could be developed in Area D3A Residual at a 1/25 ratio
D3A Residual	1/25
D3B <sup>2</sup>	No per acre ratio; see ratios for Area D3B-C1, Area D3B-C2, Area D3B-C3, and Area D3B Residual
a) D3B-C1	No per acre ratio; Area D3B-C1 shall have an aggregate number of Residential Dwelling Units based on the following formula. Maximum number of Residential Dwelling Units that could be developed in Areas D3B-C1, D3B-C2, D3B-C3 and D3B Residual, at a 1/4 ratio minus Maximum number of Residential Dwelling Units that could be developed in Areas D3B-C2, D3B-C3 and D3B Residual at a 1/25 ratio
b) D3B-C2	1/25
c) D3B-C3	1/25
d) D3B Residual	1/25
D3C <sup>3</sup>	No per acre ratio; see ratios for Area D3C-C1 and Area D3C Residual
D3C-C1	No per acre ratio; Area D3C-C1 shall have an aggregate number of Residential Dwelling Units based on the following formula.  Maximum number of Residential Dwelling Units that could be

<sup>1</sup> Area D3A is not depicted separately on the Area Maps but is comprised of Area D3A-C1 and Area D3A Residual.

<sup>2</sup> Area D3B is not depicted separately on the Area Maps but is comprised of Area D3B-C1, Area D3B-C2, Area D3B-C3, and Area D3B Residual.

<sup>3</sup> Area D3C is not depicted separately on the Area Maps but is comprised of Area D3C-C1 and Area D3C Residual.

	developed in Area D3C-C1 and Area D3C Residual, at a 1/4 ratio minus Maximum number of Residential Dwelling Units that could be developed in Area D3C Residual at a 1/25 ratio
D3C Residual	1/25
D4 <sup>4</sup>	No per acre ratio; see ratios for Area D4-C1, Area D4-C2, and Area D4 Residual
a) D4-C1	No per acre ratio; Area D4-C1 shall have an aggregate number of Residential Dwelling Units based on the following formula.  Maximum number of Residential Dwelling Units that could be developed in Area D4-C1, Area D4-C2 and Area D4 Residual at a 1/6 ratio minus Maximum number of Residential Dwelling Units that could be developed in Area D4-C2 and Area D4 Residual at a 1/25 ratio
b) D4-C2	1/25
c) D4 Residual	1/25
DS1	1/25
DS2	No per acre ratio; Area DS2 shall have an aggregate number of Residential Dwelling Units based on the following formula.  Maximum number of Residential Dwelling Units that could be developed in Area DS1, Area DS2 and Area DS3 at a 1/4 ratio minus Maximum number of Residential Dwelling Units that could be developed in Area DS1 and Area DS3 at a 1/25 ratio
DS3	1/25

3. The "Note to Clerk and Title Examiners" on Exhibit "B" to the Covenant is deleted in its entirety and replaced with the following.

**"Note to Clerk and Title Examiners"**

This Covenant is not intended to create an encumbrance on title to the property depicted in Exhibit "B" unless described such property is described on Exhibit "A" or Exhibit "A(2)" or depicted on Exhibit "A-1" or Exhibit "A-1(2)". Such property may be encumbered only with the consent of the Owner thereof by filing a Supplement in accordance with Section V.

4. Capitalized terms used but not otherwise defined herein shall have the meanings ascribed to such terms in the Covenant.

*(Signatures on the following pages)*

<sup>4</sup> Area D4 is not depicted separately on the Area Maps but is comprised of Area D4-C1, Area D4B-C2, and Area D4 Residual.

**Signature Pages for the Second Amendment to the Declaration of Covenants, Conditions and Restrictions for the Preservation of the Rural Density of East Edisto**

SIGNED, SEALED AND  
DELIVERED IN THE PRESENCE OF:

DECLARANT:

Larissa G. S.  
Barbara Young

MWV-CHARLESTON LAND PARTNERS, LLC,  
a Delaware limited liability company

Kenneth T. Seeger  
Kenneth T. Seeger, President

FILED/RECORDED  
December 5, 2014  
DORCHESTER COUNTY  
REGISTER OF DEEDS

STATE OF SOUTH CAROLINA )  
COUNTY OF BERKELEY )

I, the undersigned Notary Public, do hereby certify that Kenneth T. Seeger, President of MWV-Charleston Land Partners, LLC personally appeared before me this day and acknowledged the due execution of the foregoing instrument.

WITNESS my hand and seal this 4<sup>th</sup> DECEMBER day of October, 2014

Laura E. Sennett (L.S.)  
Notary Public for South Carolina  
My Commission expires: 10.27.2018



**Laura E. Sennett**  
**NOTARY PUBLIC**  
State of South Carolina  
My Commission Expires  
October 27, 2018

**Signature Pages for the Second Amendment to the Declaration of Covenants, Conditions and Restrictions for the Preservation of the Rural Density of East Edisto**

SIGNED, SEALED AND DELIVERED IN THE PRESENCE OF:

OWNER:

Lanetta Galt

Barbara Young

MWV-EAST EDISTO SUMMERS CORNER, LLC,  
By: MWV-Charleston Development Holdings, LLC,  
its Sole Member

Kenneth T. Seeger  
Kenneth T. Seeger, President

STATE OF SOUTH CAROLINA )  
COUNTY OF BERKELEY )

FILED/RECORDED  
December 5, 2014  
DORCHESTER COUNTY  
REGISTER OF DEEDS

I, the undersigned Notary Public, do hereby certify that Kenneth T. Seeger, President of MWV-Charleston Development Holdings, LLC, as sole member of MWV-East Edisto Summers Corner, LLC, personally appeared before me this day and acknowledged the due execution of the foregoing instrument.

WITNESS my hand and seal this 4 day of DECEMBER ~~October~~, 2014

Laura E. Sennett (L.S.)  
Notary Public for South Carolina  
My Commission expires: 10.27.2018



Laura E. Sennett  
NOTARY PUBLIC  
State of South Carolina  
My Commission Expires  
October 27, 2018

**Signature Pages for the Second Amendment to the Declaration of Covenants, Conditions and Restrictions for the Preservation of the Rural Density of East Edisto**

SIGNED, SEALED AND  
DELIVERED IN THE PRESENCE OF:

CONSERVANCY:

EAST EDISTO CONSERVANCY, INC.

By:

*Lanisha Gault*

*Kenneth T. Seeger*  
Kenneth T. Seeger, President

*Barbara Young*

FILED/RECORDED  
December 5, 2014  
DORCHESTER COUNTY  
REGISTER OF DEEDS

STATE OF SOUTH CAROLINA )  
COUNTY OF BERKELEY )

I, the undersigned Notary Public, do hereby certify that Kenneth T. Seeger, President of East Edisto Conservancy, Inc., personally appeared before me this day and acknowledged the due execution of the foregoing instrument.

WITNESS my hand and seal this 4<sup>th</sup> DECEMBER day of October, 2014

*Laura E. Sennett* (L.S.)  
Notary Public for South Carolina  
My Commission expires: 10.27.2018



Laura E. Sennett  
NOTARY PUBLIC  
State of South Carolina  
My Commission Expires  
October 27, 2018

**Exhibit "A(2)"**

Amended Description of Certain Portions of the Property

*[See Attached]*



## Sector D3A

COMMENCING AT A POINT, SAID POINT BEING THE INTERSECTION OF HIGHWAY 17 A S AND SAND PIT DRIVE; THENCE DEPARTING SAID INTERSECTION AND CONTINUING N 37°28'12" E 4163.53 TO THE TRUE POINT OF BEGINNING [N 401,972.66, E 2,189,248.49]; THENCE DEPARTING SAID POINT AND CONTINUING ON THE FOLLOWING COURSES AND DISTANCES:

THENCE N 19°05'21" W 3313.67' TO A POINT;  
 THENCE N 18°22'04" W 1867.97' TO A POINT;  
 THENCE N 71°12'14" E 868.54' TO A POINT;  
 THENCE N 76°06'26" E 129.92' TO A POINT;  
 THENCE N 62°11'20" E 237.43' TO A POINT;  
 THENCE N 21°18'57" W 2006.88' TO A POINT;  
 THENCE N 22°00'04" W 1001.59' TO A POINT;  
 THENCE N 21°19'45" W 1241.08' TO A POINT;  
 THENCE S 88°33'31" W 260.50' TO A POINT;  
 THENCE S 89°55'58" W 1384.11' TO A POINT;  
 THENCE S 89°17'41" W 393.26' TO A POINT;  
 THENCE N 09°15'59" W 62.63' TO A POINT;  
 THENCE N 07°46'31" W 452.08' TO A POINT;  
 THENCE N 00°33'39" W 995.19' TO A POINT;  
 THENCE N 09°20'36" W 155.47' TO A POINT;

POINT BEING A POINT OF CURVATURE; THENCE RUNNING ALONG A CURVE TO THE RIGHT, AN ARC LENGTH OF 185.05', WITH A RADIUS OF 441.95', A DELTA ANGLE OF 23°59'25", AND A CHORD BEARING AND DISTANCE OF N 07°30'44" W, 183.70' TO A POINT;

THENCE N 81°56'36" E 1118.97' TO A POINT;  
 THENCE N 06°40'14" E 1324.90' TO A POINT;  
 THENCE N 81°57'15" W 123.04' TO A POINT;  
 THENCE N 88°07'51" W 1554.59' TO A POINT;  
 THENCE N 00°46'12" E 161.47' TO A POINT;  
 THENCE N 02°14'30" E 122.05' TO A POINT;  
 THENCE N 06°55'55" E 109.62' TO A POINT;  
 THENCE N 03°10'47" E 70.42' TO A POINT;  
 THENCE N 00°22'32" W 98.21' TO A POINT;  
 THENCE N 05°42'42" E 58.06' TO A POINT;  
 THENCE N 03°59'33" E 117.89' TO A POINT;  
 THENCE N 05°32'13" E 84.63' TO A POINT;  
 THENCE N 01°34'26" E 121.50' TO A POINT;  
 THENCE N 03°22'44" E 441.23' TO A POINT;

POINT BEING A POINT OF CURVATURE; THENCE RUNNING ALONG A CURVE TO THE RIGHT, AN ARC LENGTH OF 326.76', WITH A RADIUS OF 805.15', A DELTA ANGLE OF 23°15'11", AND A CHORD BEARING AND DISTANCE OF N 15°00'03" E, 324.53' TO A POINT;

THENCE N 37°13'52" E 103.03' TO A POINT;  
THENCE N 28°02'23" E 86.05' TO A POINT;  
THENCE N 29°40'00" E 197.30' TO A POINT;  
THENCE N 28°47'02" E 115.58' TO A POINT;  
THENCE N 24°15'37" E 386.97' TO A POINT;  
THENCE N 22°49'48" E 106.19' TO A POINT;  
THENCE N 21°15'02" E 100.59' TO A POINT;  
THENCE N 17°13'45" E 123.21' TO A POINT;  
THENCE N 15°00'32" E 104.48' TO A POINT;  
THENCE N 58°10'35" E 44.74' TO A POINT;  
THENCE N 42°30'38" E 42.39' TO A POINT;  
THENCE N 18°26'06" E 49.41' TO A POINT;  
THENCE N 07°43'15" E 159.81' TO A POINT;  
THENCE N 09°44'01" E 334.61' TO A POINT;  
THENCE N 16°15'22" E 82.05' TO A POINT;  
THENCE N 29°26'39" E 94.24' TO A POINT;  
THENCE N 44°03'18" E 156.81' TO A POINT;  
THENCE S 88°30'49" E 1466.27' TO A POINT;  
THENCE S 15°56'30" E 0.15' TO A POINT;  
THENCE S 20°42'11" E 1580.30' TO A POINT;  
THENCE S 25°53'33" W 1554.48' TO A POINT;  
THENCE S 36°45'10" W 169.73' TO A POINT;  
THENCE S 51°51'33" E 1319.40' TO A POINT;  
THENCE S 65°46'20" E 825.62' TO A POINT;  
THENCE S 84°37'00" E 1438.39' TO A POINT;  
THENCE S 78°16'23" E 1858.51' TO A POINT;  
THENCE S 20°19'51" E 1028.42' TO A POINT;  
THENCE N 87°44'32" E 1044.13' TO A POINT;  
THENCE N 16°17'37" W 311.35' TO A POINT;  
THENCE N 09°50'06" W 191.27' TO A POINT;  
THENCE N 03°55'33" E 375.81' TO A POINT;  
THENCE N 00°35'59" E 182.97' TO A POINT;  
THENCE N 78°24'04" E 1300.78' TO A POINT;  
THENCE N 16°26'57" E 78.07' TO A POINT;  
THENCE N 01°09'07" W 117.87' TO A POINT;  
THENCE N 15°22'55" W 97.78' TO A POINT;  
THENCE N 07°36'02" W 107.00' TO A POINT;  
THENCE N 11°45'43" E 115.57' TO A POINT;  
THENCE N 21°14'38" E 136.56' TO A POINT;  
THENCE N 10°04'31" E 107.15' TO A POINT;

THENCE N 89°43'16" E 147.39' TO A POINT;  
THENCE N 89°08'41" E 945.84' TO A POINT;  
THENCE S 16°22'09" W 266.96' TO A POINT;  
THENCE S 13°29'45" W 399.38' TO A POINT;  
THENCE S 18°26'06" W 392.98' TO A POINT;  
THENCE S 36°31'44" W 521.95' TO A POINT;  
THENCE S 54°46'57" W 323.24' TO A POINT;  
THENCE S 51°45'58" W 652.61' TO A POINT;  
THENCE S 50°35'58" W 562.88' TO A POINT;  
THENCE S 12°01'50" W 717.86' TO A POINT;  
THENCE S 31°40'32" W 306.71' TO A POINT;  
THENCE S 40°36'05" W 429.65' TO A POINT;  
THENCE S 53°31'51" W 444.28' TO A POINT;  
THENCE S 78°06'41" W 301.62' TO A POINT;  
THENCE N 59°32'04" W 306.38' TO A POINT;  
THENCE N 72°21'00" W 358.63' TO A POINT;  
THENCE DUE WEST 450.49' TO A POINT;  
THENCE S 45°45'30" W 261.09' TO A POINT;  
THENCE S 22°22'48" E 127.67' TO A POINT;  
THENCE S 26°08'49" E 212.74' TO A POINT;  
THENCE S 08°54'54" E 179.25' TO A POINT;  
THENCE S 05°07'02" E 233.57' TO A POINT;  
THENCE S 11°29'16" W 253.69' TO A POINT;  
THENCE S 05°27'55" W 235.10' TO A POINT;  
THENCE S 00°44'04" E 270.86' TO A POINT;  
THENCE S 01°47'24" E 333.50' TO A POINT;  
THENCE S 02°56'08" E 271.19' TO A POINT;  
THENCE S 30°41'59" E 129.22' TO A POINT;  
THENCE S 80°11'42" E 183.23' TO A POINT;  
THENCE S 86°32'32" E 633.10' TO A POINT;  
THENCE S 70°57'36" E 213.04' TO A POINT;  
THENCE S 62°34'17" E 309.05' TO A POINT;  
THENCE S 61°39'16" E 299.84' TO A POINT;  
THENCE S 55°58'36" E 421.55' TO A POINT;  
THENCE S 62°06'10" E 298.80' TO A POINT;  
THENCE S 26°33'54" E 243.15' TO A POINT;  
THENCE S 06°19'47" E 252.13' TO A POINT;  
THENCE S 46°23'38" E 154.69' TO A POINT;  
THENCE S 05°26'25" E 327.69' TO A POINT;  
THENCE S 17°21'14" W 260.40' TO A POINT;  
THENCE S 50°54'22" W 320.24' TO A POINT;  
THENCE S 66°48'05" W 354.91' TO A POINT;  
THENCE S 06°20'25" W 281.33' TO A POINT;  
THENCE S 03°10'47" W 280.04' TO A POINT;

THENCE S 47°07'16" W 296.78' TO A POINT;  
THENCE S 10°00'29" W 268.16' TO A POINT;  
THENCE S 02°51'45" E 311.07' TO A POINT;  
THENCE S 32°00'19" E 293.10' TO A POINT;  
THENCE S 64°21'32" E 430.77' TO A POINT;  
THENCE S 65°53'52" E 269.13' TO A POINT;  
THENCE N 74°03'17" E 423.36' TO A POINT;  
THENCE S 78°41'24" E 955.94' TO A POINT;  
THENCE N 73°23'35" E 2974.44' TO A POINT;  
THENCE S 87°23'51" E 81.23' TO A POINT;  
THENCE N 68°11'55" E 48.87' TO A POINT;  
THENCE N 85°48'54" E 638.60' TO A POINT;  
THENCE N 73°36'38" E 275.26' TO A POINT;  
THENCE N 66°32'28" E 1276.52' TO A POINT;  
THENCE S 33°41'24" E 423.14' TO A POINT;  
THENCE S 33°26'24" E 672.73' TO A POINT;  
THENCE S 41°11'09" E 112.59' TO A POINT;  
THENCE S 44°32'03" E 921.25' TO A POINT;  
THENCE S 44°09'40" E 1544.96' TO A POINT;  
THENCE S 55°36'05" E 1443.53' TO A POINT;  
THENCE S 65°41'28" W 1085.64' TO A POINT;  
THENCE S 72°09'01" W 334.61' TO A POINT;  
THENCE S 72°38'11" W 466.65' TO A POINT;  
THENCE S 71°22'00" W 369.89' TO A POINT;  
THENCE S 71°44'27" W 549.73' TO A POINT;  
THENCE S 70°56'32" W 202.05' TO A POINT;  
THENCE S 68°55'06" W 269.08' TO A POINT;  
THENCE S 69°40'58" W 731.26' TO A POINT;  
THENCE S 68°45'47" W 940.61' TO A POINT;  
THENCE S 68°20'38" W 317.55' TO A POINT;  
THENCE S 69°12'10" W 482.85' TO A POINT;  
THENCE S 69°32'18" W 2060.20' TO A POINT;  
THENCE S 69°43'26" W 925.94' TO A POINT;  
THENCE S 77°44'09" W 1004.73' TO A POINT;  
THENCE N 10°22'27" W 1035.85' TO A POINT;  
THENCE N 10°41'38" W 599.43' TO A POINT;  
THENCE N 09°44'13" W 230.57' TO A POINT;  
THENCE N 08°42'46" E 104.12' TO A POINT;  
THENCE N 13°10'02" E 621.14' TO A POINT;  
THENCE N 12°31'53" E 346.57' TO A POINT;  
THENCE N 13°02'14" W 1791.09' TO A POINT;  
THENCE S 71°07'03" W 1282.88' TO A POINT;  
THENCE S 69°48'42" W 535.63' TO A POINT;  
THENCE S 70°35'32" W 2565.24' TO A POINT;

THENCE S 71°10'33" W 318.55' TO A POINT;  
 THENCE S 70°28'09" W 547.69' TO THE POINT OF BEGINNING, CONTAINING 2608.67 ACRES OF LAND  
 MORE OR LESS.

PART 2

COMMENCING AT A CORNER OF PART 1, SAID POINT BEING BETWEEN LINE 47 AND LINE 48 OF THIS  
 EXHIBIT; THENCE DEPARTING SAID POINT AND CONTINUING S 88°30'49" E 528.06 TO THE TRUE POINT  
 OF BEGINNING [N 418,322.27, E 2,187,644.12]:

THENCE N 40°30'56" E 522.97' TO A POINT;  
 THENCE N 07°58'23" W 350.47' TO A POINT;  
 THENCE N 88°20'56" W 1142.86' TO A POINT;  
 THENCE N 20°11'02" W 348.78' TO A POINT;  
 THENCE N 12°20'54" W 174.33' TO A POINT;  
 THENCE N 07°05'43" W 188.69' TO A POINT;  
 THENCE N 04°05'26" W 298.85' TO A POINT;  
 THENCE N 08°13'04" W 272.57' TO A POINT;  
 THENCE N 13°34'00" W 94.95' TO A POINT;  
 THENCE N 17°58'48" W 503.55' TO A POINT;  
 THENCE N 13°09'43" W 98.43' TO A POINT;

POINT BEING A POINT OF CURVATURE; THENCE RUNNING ALONG A CURVE TO THE RIGHT, AN ARC  
 LENGTH OF 396.14', WITH A RADIUS OF 627.41', A DELTA ANGLE OF 36°10'35", AND A CHORD BEARING  
 AND DISTANCE OF N 04°55'35" E, 389.60' TO A POINT;

THENCE N 23°00'52" E 374.76' TO A POINT;  
 THENCE N 21°13'38" E 138.45' TO A POINT;  
 THENCE N 23°54'44" E 80.52' TO A POINT;  
 THENCE N 22°12'33" E 122.38' TO A POINT;  
 THENCE N 21°09'14" E 175.67' TO A POINT;  
 THENCE N 17°58'30" E 172.16' TO A POINT;  
 THENCE N 14°26'24" E 101.92' TO A POINT;  
 THENCE N 16°34'30" E 87.67' TO A POINT;  
 THENCE N 13°01'21" E 226.26' TO A POINT;  
 THENCE S 88°44'23" E 279.57' TO A POINT;  
 THENCE N 89°31'02" E 145.85' TO A POINT;  
 THENCE S 89°25'05" E 329.89' TO A POINT;  
 THENCE S 85°13'59" E 129.07' TO A POINT;  
 THENCE S 71°07'06" E 9.46' TO A POINT;  
 THENCE S 82°54'48" E 46.50' TO A POINT;  
 THENCE N 76°53'49" E 18.11' TO A POINT;  
 THENCE N 17°28'34" E 419.19' TO A POINT;  
 THENCE S 88°12'45" E 2456.19' TO A POINT;

THENCE N 87°44'51" E 455.66' TO A POINT;  
THENCE N 03°39'48" W 106.05' TO A POINT;  
THENCE N 01°54'23" W 92.79' TO A POINT;  
THENCE N 88°10'37" W 2825.21' TO A POINT;  
THENCE S 18°39'43" W 223.31' TO A POINT;  
THENCE N 88°52'13" W 1027.81' TO A POINT;  
THENCE N 06°30'36" E 432.39' TO A POINT;  
THENCE S 88°33'25" E 335.17' TO A POINT;  
THENCE S 89°06'38" E 699.65' TO A POINT;  
THENCE S 87°54'31" E 1411.86' TO A POINT;  
THENCE S 89°12'37" E 881.94' TO A POINT;  
THENCE S 88°52'46" E 334.81' TO A POINT;  
THENCE S 89°45'33" E 182.93' TO A POINT;  
THENCE N 03°15'27" W 549.72' TO A POINT;  
THENCE N 89°17'35" E 671.33' TO A POINT;  
THENCE N 00°49'41" W 1028.83' TO A POINT;  
THENCE N 87°21'59" E 267.73' TO A POINT;  
THENCE N 86°06'55" E 117.56' TO A POINT;  
THENCE N 87°27'04" E 148.80' TO A POINT;  
THENCE N 88°29'49" E 485.20' TO A POINT;  
THENCE N 87°07'27" E 383.49' TO A POINT;  
THENCE N 89°10'01" E 107.45' TO A POINT;  
THENCE N 87°47'58" E 96.96' TO A POINT;  
THENCE S 87°13'32" E 144.16' TO A POINT;  
THENCE S 84°54'27" E 209.15' TO A POINT;  
THENCE S 86°25'35" E 584.89' TO A POINT;  
THENCE S 89°29'29" E 213.81' TO A POINT;  
THENCE N 85°01'46" E 341.02' TO A POINT;  
THENCE S 02°31'01" E 115.64' TO A POINT;  
THENCE S 00°48'48" E 582.53' TO A POINT;  
THENCE S 01°14'54" W 2014.54' TO A POINT;  
THENCE S 08°33'47" E 264.65' TO A POINT;  
THENCE N 68°26'49" E 994.05' TO A POINT;  
THENCE S 00°32'13" E 1836.93' TO A POINT;  
THENCE S 01°05'17" E 195.28' TO A POINT;  
THENCE S 00°35'14" W 713.77' TO A POINT;  
THENCE S 03°04'05" E 354.53' TO A POINT;  
THENCE N 70°31'37" E 2289.26' TO A POINT;  
THENCE S 09°27'44" E 2651.76' TO A POINT;  
THENCE S 87°57'36" W 633.84' TO A POINT;  
THENCE S 19°40'17" E 572.47' TO A POINT;  
THENCE S 20°41'44" E 751.62' TO A POINT;  
THENCE S 20°32'56" E 1593.95' TO A POINT;  
THENCE S 87°33'28" W 277.20' TO A POINT;

THENCE N 16°03'07" W 160.80' TO A POINT;  
THENCE N 14°33'55" W 299.54' TO A POINT;  
THENCE S 74°33'46" W 551.13' TO A POINT;  
THENCE S 16°55'38" E 317.57' TO A POINT;  
THENCE S 89°09'32" W 709.71' TO A POINT;  
THENCE N 10°02'13" W 328.81' TO A POINT;  
THENCE N 08°35'31" W 441.59' TO A POINT;  
THENCE N 87°30'02" W 388.38' TO A POINT;  
THENCE N 15°24'37" W 1313.26' TO A POINT;  
THENCE N 15°13'05" W 469.59' TO A POINT;  
THENCE N 13°14'17" W 353.99' TO A POINT;  
THENCE N 15°34'18" W 1786.97' TO A POINT;  
THENCE S 70°24'58" W 370.49' TO A POINT;  
THENCE S 69°10'46" W 614.16' TO A POINT;  
THENCE S 69°37'21" W 749.45' TO A POINT;  
THENCE N 01°15'49" E 997.02' TO A POINT;  
THENCE N 01°05'36" W 184.62' TO A POINT;  
THENCE S 71°43'46" W 1738.19' TO A POINT;  
THENCE S 03°06'30" W 497.97' TO A POINT;  
THENCE S 10°21'37" W 870.67' TO A POINT;  
THENCE S 20°24'49" E 899.79' TO A POINT;  
THENCE S 20°15'40" E 1023.12' TO A POINT;  
THENCE S 18°05'58" E 652.47' TO A POINT;  
THENCE S 88°23'38" E 203.74' TO A POINT;  
THENCE S 03°41'39" W 168.53' TO A POINT;  
THENCE S 09°49'28" E 96.52' TO A POINT;  
THENCE N 50°54'24" W 2809.63' TO A POINT;  
THENCE N 59°10'48" W 2323.39' TO A POINT;  
THENCE S 89°26'57" W 1227.17' TO THE POINT OF BEGINNING, CONTAINING 1339.72 ACRES OF LAND MORE OR LESS.

FOR A TOTAL SECTOR AREA OF 3948.39 ACRES OF LAND MORE OR LESS.

## Sector D3A-C1

BEGINNING AT A POINT. SAID POINT BEING AT THE INTERSECTION OF OLD BEECH HILL ROAD AND SAND PIT DRIVE [N 416,857.56, E 2,187,674.95]: THENCE DEPARTING SAID POINT OF BEGINNING AND CONTINUING ON THE FOLLOWING COURSES AND DISTANCES:

THENCE N 20°42'11" W 1580.30' TO A POINT;  
THENCE N 15°56'30" W 0.15' TO A POINT;  
THENCE S 88°30'49" E 528.06' TO A POINT;  
THENCE N 89°26'57" E 1227.17' TO A POINT;  
THENCE S 59°10'48" E 2323.39' TO A POINT;  
THENCE S 50°54'24" E 2809.63' TO A POINT;  
THENCE S 09°49'28" E 230.07' TO A POINT;  
THENCE S 10°28'57" E 250.49' TO A POINT;  
THENCE S 07°35'21" E 147.90' TO A POINT;  
THENCE S 89°26'20" W 965.76' TO A POINT;  
THENCE S 88°38'14" W 229.02' TO A POINT;  
THENCE S 87°45'07" W 409.87' TO A POINT;  
THENCE S 18°31'01" E 142.12' TO A POINT;  
THENCE S 20°19'51" E 991.62' TO A POINT;  
THENCE N 78°16'23" W 1858.51' TO A POINT;  
THENCE N 84°37'00" W 1438.39' TO A POINT;  
THENCE N 65°46'20" W 825.62' TO A POINT;  
THENCE N 51°51'33" W 1319.40' TO A POINT;  
THENCE N 36°45'10" E 169.73' TO A POINT;  
THENCE N 25°53'33" E 1554.48' TO THE POINT OF BEGINNING, CONTAINING 401.74 ACRES OF LAND MORE OR LESS.



## Sector D3C

COMMENCING AT A POINT, SAID POINT BEING THE INTERSECTION OF NORTHERN RIGHT-OF-WAY LINE OF SUMMERS ROAD, SC HIGHWAY 183 AND THE EASTERLY RIGHT-OF-WAY LINE OF CLUBHOUSE ROAD, S-18-84; THENCE DEPARTING SAID INTERSECTION AND CONTINUING N 32°21'20" E 8634.12' TO THE TRUE POINT OF BEGINNING [N 395,393.09, E 2,212,576.87]; THENCE DEPARTING SAID POINT OF BEGINNING AND CONTINUING THE FOLLOWING COURSES AND DISTANCES:

THENCE N 00°26'39" W 2665.83' TO A POINT;  
 THENCE N 10°22'28" W 2520.99' TO A POINT;  
 THENCE N 57°09'33" W 249.78' TO A POINT;  
 THENCE N 43°55'02" E 2065.14' TO A POINT;  
 THENCE S 67°48'42" E 3354.65' TO A POINT;  
 THENCE S 50°38'00" E 3053.29' TO A POINT;

POINT BEING A NON-TANGENT POINT OF CURVATURE; THENCE RUNNING ALONG A CURVE TO THE LEFT, AN ARC LENGTH OF 299.33', WITH A RADIUS OF 881.83', A DELTA ANGLE OF 19°26'55", AND A CHORD BEARING AND DISTANCE OF S 54°37'58" W 297.90' TO A POINT;

THENCE S 44°53'51" W 1280.21' TO A POINT;

POINT BEING A NON-TANGENT POINT OF CURVATURE; THENCE RUNNING ALONG A CURVE TO THE RIGHT, AN ARC LENGTH OF 134.99', WITH A RADIUS OF 11426.16', A DELTA ANGLE OF 00°40'37", AND A CHORD BEARING AND DISTANCE OF S 45°17'12" W 134.99' TO A POINT;

THENCE S 45°37'30" W 744.56' TO A POINT;  
 THENCE S 45°06'06" W 1558.81' TO A POINT;  
 THENCE S 44°53'54" E 108.00' TO A POINT;  
 THENCE S 45°06'06" W 15.76' TO A POINT;  
 THENCE S 43°02'35" E 3127.94' TO A POINT;  
 THENCE S 45°40'33" E 188.63' TO A POINT;  
 THENCE S 36°35'20" E 463.77' TO A POINT;  
 THENCE S 33°39'36" E 522.11' TO A POINT;  
 THENCE N 43°35'41" E 290.74' TO A POINT;  
 THENCE N 45°00'28" W 509.40' TO A POINT;  
 THENCE N 39°32'31" E 231.22' TO A POINT;  
 THENCE N 43°30'53" E 434.49' TO A POINT;  
 THENCE N 41°10'50" E 554.08' TO A POINT;  
 THENCE N 41°59'09" E 2217.00' TO A POINT;  
 THENCE N 42°54'10" E 513.83' TO A POINT;  
 THENCE S 51°28'14" E 150.16' TO A POINT;  
 THENCE S 34°46'15" E 1532.29' TO A POINT;  
 THENCE S 69°27'55" E 5153.94' TO A POINT;  
 THENCE S 30°15'39" E 650.81' TO A POINT;

THENCE S 44°30'30" W 919.66' TO A POINT;  
 THENCE S 30°29'30" E 2524.32' TO A POINT;  
 THENCE S 44°48'51" W 171.58' TO A POINT;  
 THENCE S 45°11'09" E 25.00' TO A POINT;  
 THENCE S 44°48'51" W 775.00' TO A POINT;  
 THENCE N 45°11'09" W 5.00' TO A POINT;  
 THENCE S 44°48'51" W 200.00' TO A POINT;  
 THENCE S 45°11'09" E 5.00' TO A POINT;  
 THENCE S 44°48'51" W 250.00' TO A POINT;  
 THENCE N 45°11'09" W 10.00' TO A POINT;  
 THENCE S 44°48'51" W 116.18' TO A POINT;

POINT BEING A POINT OF CURVATURE; THENCE RUNNING ALONG A CURVE TO THE LEFT, AN ARC  
 LENGTH OF 292.74', WITH A RADIUS OF 1969.86', A DELTA ANGLE OF 08°30'53", AND A CHORD BEARING  
 AND DISTANCE OF S 40°33'25" W 292.47' TO A POINT;

THENCE S 53°42'02" E 5.00' TO A POINT;

POINT BEING A POINT OF CURVATURE; THENCE RUNNING ALONG A CURVE TO THE LEFT, AN ARC  
 LENGTH OF 206.84', WITH A RADIUS OF 1964.86', A DELTA ANGLE OF 06°01'53", AND A CHORD BEARING  
 AND DISTANCE OF S 33°17'02" W 206.74' TO A POINT;

THENCE N 21°48'51" W 552.94' TO A POINT;  
 THENCE N 07°07'30" W 607.01' TO A POINT;  
 THENCE N 41°59'14" W 506.46' TO A POINT;  
 THENCE DUE WEST 564.68' TO A POINT;  
 THENCE N 68°57'45" W 524.34' TO A POINT;  
 THENCE N 49°53'57" W 935.09' TO A POINT;  
 THENCE N 25°01'01" W 623.14' TO A POINT;  
 THENCE S 77°28'16" W 347.07' TO A POINT;  
 THENCE N 56°18'36" W 542.93' TO A POINT;  
 THENCE N 54°09'44" W 835.86' TO A POINT;  
 THENCE S 36°15'14" W 700.24' TO A POINT;  
 THENCE S 07°07'30" E 1214.02' TO A POINT;  
 THENCE S 24°46'31" E 1077.99' TO A POINT;  
 THENCE S 41°51'18" E 2426.00' TO A POINT;  
 THENCE S 87°57'17" E 1054.74' TO A POINT;  
 THENCE S 58°15'10" E 932.19' TO A POINT;  
 THENCE S 15°31'48" W 1966.68' TO A POINT;  
 THENCE N 46°19'14" W 2960.43' TO A POINT;  
 THENCE S 44°25'46" W 1567.50' TO A POINT;  
 THENCE S 45°19'14" E 1341.12' TO A POINT;  
 THENCE S 44°10'46" W 825.31' TO A POINT;  
 THENCE S 45°56'06" E 2194.81' TO A POINT;

THENCE S 44°22'38" W 198.11' TO A POINT;  
 THENCE S 45°47'22" E 836.48' TO A POINT;

POINT BEING A POINT OF CURVATURE; THENCE RUNNING ALONG A CURVE TO THE RIGHT, AN ARC LENGTH OF 148.88', WITH A RADIUS OF 3235.15', A DELTA ANGLE OF 02°38'12", AND A CHORD BEARING AND DISTANCE OF S 21°03'50" W 148.87' TO A POINT;

POINT BEING A POINT OF COMPOUND CURVATURE; THENCE RUNNING ALONG A CURVE TO THE RIGHT, AN ARC LENGTH OF 3.85' WITH A RADIUS OF 1876.97', A DELTA ANGLE OF 00°07'03", AND A CHORD BEARING AND DISTANCE OF S 27°27'29" W 3.85' TO A POINT;

THENCE S 27°31'00" W 638.90' TO A POINT;  
 THENCE N 62°29'00" W 12.02' TO A POINT;  
 THENCE S 27°31'00" W 275.00' TO A POINT;  
 THENCE S 62°29'00" E 12.02' TO A POINT;  
 THENCE S 27°31'00" W 275.41' TO A POINT;

POINT BEING A POINT OF CURVATURE; THENCE RUNNING ALONG A CURVE TO THE RIGHT, AN ARC LENGTH OF 215.92' WITH A RADIUS OF 17153.56', A DELTA ANGLE OF 00°43'16", AND A CHORD BEARING AND DISTANCE OF S 27°52'38" W 215.92' TO A POINT;

THENCE S 30°53'45" W 175.42' TO A POINT;  
 THENCE N 59°06'15" W 15.00' TO A POINT;  
 THENCE S 30°53'45" W 180.01' TO A POINT;  
 THENCE S 24°59'22" W 151.15' TO A POINT;

POINT BEING A NON-TANGENT POINT OF CURVATURE; THENCE RUNNING ALONG A CURVE TO THE LEFT, AN ARC LENGTH OF 256.55', WITH A RADIUS OF 21479.06', A DELTA ANGLE OF 00°41'04", AND A CHORD BEARING AND DISTANCE OF S 30°08'32" W 256.55' TO A POINT;

THENCE S 29°48'00" W 7.46' TO A POINT;  
 THENCE N 89°37'38" W 95.47' TO A POINT;  
 THENCE N 45°20'56" W 729.49' TO A POINT;  
 THENCE N 45°55'13" W 209.88' TO A POINT;  
 THENCE N 46°53'03" W 978.97' TO A POINT;  
 THENCE S 73°19'17" W 2095.42' TO A POINT;  
 THENCE S 73°34'19" W 917.54' TO A POINT;  
 THENCE S 19°50'17" W 81.10' TO A POINT;  
 THENCE S 18°56'12" W 482.17' TO A POINT;  
 THENCE S 49°09'11" E 90.31' TO A POINT;  
 THENCE S 47°21'39" E 1070.47' TO A POINT;  
 THENCE S 39°34'01" W 966.45' TO A POINT;  
 THENCE N 62°46'25" W 211.52' TO A POINT;  
 THENCE N 54°03'24" W 1003.31' TO A POINT;

THENCE N 55°21'26" W 142.85' TO A POINT;  
THENCE N 54°15'59" W 1293.53' TO A POINT;  
THENCE S 56°03'07" W 157.24' TO A POINT;  
THENCE S 32°51'02" W 192.40' TO A POINT;  
THENCE S 03°19'29" E 318.85' TO A POINT;  
THENCE N 76°08'34" W 451.87' TO A POINT;  
THENCE N 51°41'50" W 651.12' TO A POINT;  
THENCE S 84°27'46" W 808.98' TO A POINT;  
THENCE N 49°19'49" W 258.17' TO A POINT;  
THENCE S 37°37'24" W 264.69' TO A POINT;  
THENCE N 10°57'01" W 387.53' TO A POINT;  
THENCE N 14°28'11" W 159.15' TO A POINT;  
THENCE N 20°05'19" W 125.68' TO A POINT;  
THENCE N 22°57'06" W 117.80' TO A POINT;  
THENCE N 30°11'01" W 94.41' TO A POINT;  
THENCE N 36°24'56" W 216.18' TO A POINT;  
THENCE N 44°03'30" W 411.49' TO A POINT;  
THENCE N 89°27'41" E 70.25' TO A POINT;  
THENCE S 87°33'11" E 2439.72' TO A POINT;  
THENCE N 73°51'20" E 2472.50' TO A POINT;  
THENCE N 67°15'50" E 2364.05' TO A POINT;  
THENCE N 02°45'55" W 1566.58' TO A POINT;  
THENCE N 15°07'25" W 21.24' TO A POINT;  
THENCE N 28°54'18" E 96.41' TO A POINT;  
THENCE N 41°11'09" E 885.84' TO A POINT;  
THENCE N 22°31'14" E 243.64' TO A POINT;  
THENCE N 17°55'41" W 627.45' TO A POINT;  
THENCE N 39°33'35" E 824.83' TO A POINT;  
THENCE N 01°16'23" E 1751.67' TO A POINT;  
THENCE N 53°47'26" W 3012.35' TO A POINT;  
THENCE N 29°44'42" W 74.87' TO A POINT;  
THENCE S 53°31'51" W 125.44' TO A POINT;  
THENCE N 59°40'35" W 1259.87' TO A POINT;  
THENCE S 85°09'22" W 28.53' TO A POINT;  
THENCE N 67°53'26" W 473.24' TO A POINT;  
THENCE N 18°26'06" W 476.60' TO A POINT;  
THENCE N 21°24'47" W 750.57' TO A POINT;  
THENCE N 11°02'27" W 572.34' TO A POINT;  
THENCE N 25°08'41" W 493.85' TO A POINT;  
THENCE N 55°00'29" W 195.02' TO A POINT;  
THENCE N 41°59'14" W 840.85' TO A POINT;  
THENCE N 34°33'21" W 755.45' TO A POINT;  
THENCE N 82°30'15" W 660.48' TO A POINT;  
THENCE S 67°53'26" W 482.85' TO A POINT;

THENCE N 60°21'00" W 433.59' TO A POINT;  
THENCE N 43°17'30" W 573.33' TO A POINT;  
THENCE N 81°48'00" W 496.10' TO A POINT;  
THENCE N 52°25'53" W 683.38' TO A POINT;  
THENCE N 79°41'43" W 931.69' TO THE POINT OF BEGINNING, CONTAINING 2442.42 ACRES OF LAND  
MORE OR LESS.

## Sector D3C-C1

COMMENCING AT A POINT, SAID POINT BEING AT THE INTERSECTION OF CLUBHOUSE ROAD AND DELEMAR HIGHWAY; THENCE DEPARTING SAID POINT AND CONTINUING N 28°55'34" E 16334.28' TO THE TRUE POINT OF BEGINNING [N 386,800.31, E 2,226,257.67]; THENCE DEPARTING SAID POINT OF BEGINNING AND CONTINUING ON THE FOLLOWING COURSES AND DISTANCES:

THENCE N 58°15'10" W 932.19' TO A POINT;  
 THENCE N 87°57'17" W 1054.74' TO A POINT;  
 THENCE N 41°51'18" W 2426.00' TO A POINT;  
 THENCE N 24°46'31" W 1077.99' TO A POINT;  
 THENCE N 07°07'30" W 1214.02' TO A POINT;  
 THENCE N 36°15'14" E 700.24' TO A POINT;  
 THENCE S 54°09'44" E 835.86' TO A POINT;  
 THENCE S 56°18'36" E 542.93' TO A POINT;  
 THENCE N 77°28'16" E 347.07' TO A POINT;  
 THENCE S 25°01'01" E 623.14' TO A POINT;  
 THENCE S 49°53'57" E 935.09' TO A POINT;  
 THENCE S 68°57'45" E 524.34' TO A POINT;  
 THENCE DUE EAST 564.68' TO A POINT;  
 THENCE S 41°59'14" E 506.46' TO A POINT;  
 THENCE S 07°07'30" E 607.01' TO A POINT;  
 THENCE S 21°48'51" E 552.94' TO A POINT;

POINT BEING A NON-TANGENT POINT OF CURVATURE; THENCE RUNNING ALONG A CURVE TO THE LEFT, AN ARC LENGTH OF 256.12' WITH A RADIUS OF 1964.86', A DELTA ANGLE OF 07°28'07", AND A CHORD BEARING AND DISTANCE OF S 26°32'02" W , 255.94' TO A POINT;

THENCE S 67°12'02" E 5.00' TO A POINT;

POINT BEING A POINT OF CURVATURE; THENCE RUNNING ALONG A CURVE TO THE LEFT, AN ARC LENGTH OF 248.66', WITH A RADIUS OF 1959.86', A DELTA ANGLE OF 07°16'11", AND A CHORD BEARING AND DISTANCE OF S 19°09'53" W , 248.50' TO A POINT;

THENCE S 15°31'48" W 170.07' TO A POINT;  
 THENCE S 74°28'12" E 17.00' TO A POINT;  
 THENCE S 15°31'48" W 920.14' TO THE POINT OF BEGINNING, CONTAINING 269.45 ACRES OF LAND MORE OR LESS.

## Sector D4

COMMENCING AT A POINT, SAID POINT BEING THE INTERSECTION OF SOUTHEASTERLY RIGHT-OF-WAY LINE OF DELEMAR HIGHWAY AND CLUBHOUSE ROAD; THENCE DEPARTING SAID INTERSECTION AND CONTINUING N 35°55'22" E 10657.11' TO THE TRUE POINT OF BEGINNING [N 381,134.06, E 2,224,609.54]; THENCE DEPARTING SAID POINT OF BEGINNING AND CONTINUING ON THE FOLLOWING COURSES AND DISTANCES:

THENCE N 27°31'00" E 155.22' TO A POINT;  
 THENCE N 62°29'00" W 20.00' TO A POINT;  
 THENCE N 27°31'00" E 353.22' TO A POINT;

POINT BEING A POINT OF CURVATURE; THENCE RUNNING ALONG A CURVE TO THE LEFT, AN ARC LENGTH OF 123.82', WITH A RADIUS OF 3340.15', A DELTA ANGLE OF 02°07'26", AND A CHORD BEARING AND DISTANCE OF N 26°27'17" E, 123.81 TO A POINT;

THENCE N 64°36'26" W 5.00' TO A POINT;

POINT BEING A POINT OF CURVATURE, NON-TANGENT; THENCE RUNNING ALONG A CURVE TO THE LEFT, AN ARC LENGTH OF 408.16', WITH A RADIUS OF 3335.15', A DELTA ANGLE OF 07°00'43", AND A CHORD BEARING AND DISTANCE OF N 21°53'12" E, 407.91 TO A POINT;

THENCE S 43°24'26" E 453.31' TO A POINT;  
 THENCE S 44°42'37" E 941.43' TO A POINT;  
 THENCE S 44°13'37" E 260.36' TO A POINT;  
 THENCE S 50°11'40" E 107.68' TO A POINT;  
 THENCE S 60°23'44" E 58.67' TO A POINT;  
 THENCE S 77°35'42" E 106.41' TO A POINT;  
 THENCE S 74°23'15" E 174.28' TO A POINT;  
 THENCE S 66°48'04" E 99.29' TO A POINT;  
 THENCE S 49°57'48" E 17.14' TO A POINT;  
 THENCE S 33°21'59" E 125.38' TO A POINT;  
 THENCE S 42°44'32" E 253.11' TO A POINT;  
 THENCE S 48°31'00" E 125.69' TO A POINT;  
 THENCE N 14°59'42" E 1195.89' TO A POINT;  
 THENCE N 03°48'51" W 626.39' TO A POINT;  
 THENCE N 37°06'15" E 2037.51' TO A POINT;  
 THENCE S 85°59'29" E 1890.36' TO A POINT;  
 THENCE N 29°41'26" E 965.93' TO A POINT;  
 THENCE N 26°16'45" W 1866.52' TO A POINT;  
 THENCE N 69°22'02" W 752.74' TO A POINT;  
 THENCE N 30°06'23" W 845.31' TO A POINT;  
 THENCE N 55°08'27" W 613.57' TO A POINT;  
 THENCE N 66°45'00" W 1717.26' TO A POINT;  
 THENCE S 75°45'47" W 136.66' TO A POINT;

POINT BEING A POINT OF CURVATURE, NON-TANGENT; THENCE RUNNING ALONG A CURVE TO THE

RIGHT; AN ARC LENGTH OF 438.61', WITH A RADIUS OF 1859.86', A DELTA ANGLE OF 13°30'43", AND A CHORD BEARING AND DISTANCE OF N 30°44'00" E, 437.59 TO A POINT;

POINT BEING A POINT OF COMPOUND CURVATURE; THENCE RUNNING ALONG A CURVE TO THE RIGHT, AN ARC LENGTH OF 57.07', WITH A RADIUS OF 1399.39', A DELTA ANGLE OF 02°20'12", AND A CHORD BEARING AND DISTANCE OF N 43°38'42" E, 57.07 TO A POINT;

THENCE N 44°48'48" E 1011.25' TO A POINT;  
 THENCE S 45°11'12" E 42.00' TO A POINT;  
 THENCE N 44°48'48" E 178.95' TO A POINT;  
 THENCE N 45°11'12" W 42.00' TO A POINT;  
 THENCE N 44°48'48" E 331.05' TO A POINT;  
 THENCE S 45°11'09" E 11.01' TO A POINT;  
 THENCE N 44°48'51" E 129.76' TO A POINT;  
 THENCE S 52°39'02" E 517.51' TO A POINT;  
 THENCE S 66°08'23" E 199.70' TO A POINT;  
 THENCE S 45°54'07" E 143.91' TO A POINT;  
 THENCE N 75°04'07" E 362.42' TO A POINT;  
 THENCE N 83°58'08" E 1194.30' TO A POINT;  
 THENCE DUE SOUTH 717.87' TO A POINT;  
 THENCE S 13°07'11" E 67.38' TO A POINT;  
 THENCE S 23°11'55" E 537.14' TO A POINT;  
 THENCE S 21°19'09" E 576.02' TO A POINT;  
 THENCE S 04°17'21" E 69.64' TO A POINT;  
 THENCE S 66°11'39" E 645.17' TO A POINT;  
 THENCE S 82°54'32" E 1333.36' TO A POINT;  
 THENCE N 48°42'02" E 415.62' TO A POINT;  
 THENCE N 81°54'44" E 582.93' TO A POINT;  
 THENCE S 32°31'18" E 2994.83' TO A POINT;  
 THENCE S 36°20'35" E 624.36' TO A POINT;  
 THENCE S 28°50'35" E 304.92' TO A POINT;  
 THENCE S 12°40'35" E 718.74' TO A POINT;  
 THENCE S 34°44'25" W 216.48' TO A POINT;  
 THENCE S 39°13'35" E 559.02' TO A POINT;  
 THENCE S 10°49'25" W 726.00' TO A POINT;  
 THENCE S 55°50'35" E 2237.19' TO A POINT;  
 THENCE S 33°34'25" W 418.88' TO A POINT;  
 THENCE S 46°32'34" E 1496.34' TO A POINT;  
 THENCE S 69°06'32" E 504.58' TO A POINT;  
 THENCE N 80°45'28" E 312.18' TO A POINT;  
 THENCE S 79°14'32" E 2437.90' TO A POINT;  
 THENCE S 29°44'42" W 206.05' TO A POINT;  
 THENCE S 31°22'42" W 316.91' TO A POINT;  
 THENCE S 31°10'29" W 345.50' TO A POINT;  
 THENCE S 32°02'05" W 54.27' TO A POINT;

POINT BEING A POINT OF CURVATURE; THENCE RUNNING ALONG A CURVE TO THE RIGHT, AN ARC



LENGTH OF 71.74', WITH A RADIUS OF 100.00', A DELTA ANGLE OF 41°06'12", AND A CHORD BEARING AND DISTANCE OF S 52°35'10" W, 70.21 TO A POINT;

THENCE S 73°08'16" W 573.86' TO A POINT;  
 THENCE S 73°41'30" W 206.42' TO A POINT;  
 THENCE S 73°20'57" W 1129.89' TO A POINT;  
 THENCE S 73°25'11" W 1065.94' TO A POINT;

POINT BEING A POINT OF CURVATURE; THENCE RUNNING ALONG A CURVE TO THE RIGHT, AN ARC LENGTH OF 222.61', WITH A RADIUS OF 2000.00', A DELTA ANGLE OF 06°22'38", AND A CHORD BEARING AND DISTANCE OF S 76°36'30" W, 222.49 TO A POINT;

THENCE S 79°47'49" W 500.78' TO A POINT;  
 THENCE S 79°24'01" W 457.28' TO A POINT;

POINT BEING A POINT OF CURVATURE; THENCE RUNNING ALONG A CURVE TO THE RIGHT, AN ARC LENGTH OF 211.00', WITH A RADIUS OF 275.00', A DELTA ANGLE OF 43°57'43", AND A CHORD BEARING AND DISTANCE OF N 78°37'08" W, 205.86 TO A POINT;

THENCE N 56°38'16" W 598.04' TO A POINT;  
 THENCE N 55°50'18" W 687.84' TO A POINT;  
 THENCE N 56°27'31" W 139.38' TO A POINT;  
 THENCE N 79°22'49" E 0.00' TO A POINT;  
 THENCE S 37°32'36" W 1348.14' TO A POINT;  
 THENCE S 36°30'06" W 1169.06' TO A POINT;  
 THENCE S 05°10'26" E 1274.38' TO A POINT;  
 THENCE N 71°07'18" W 605.67' TO A POINT;  
 THENCE N 18°36'10" W 45.01' TO A POINT;  
 THENCE S 16°47'16" W 459.31' TO A POINT;  
 THENCE S 16°06'56" W 551.69' TO A POINT;  
 THENCE S 07°40'29" W 133.29' TO A POINT;  
 THENCE S 01°35'47" W 263.46' TO A POINT;  
 THENCE S 01°39'39" E 213.39' TO A POINT;  
 THENCE S 04°24'51" W 138.24' TO A POINT;  
 THENCE S 07°07'25" W 36.37' TO A POINT;  
 THENCE S 49°28'11" E 74.48' TO A POINT;  
 THENCE S 63°35'31" E 55.24' TO A POINT;  
 THENCE S 43°07'39" E 987.88' TO A POINT;  
 THENCE S 43°49'05" E 255.89' TO A POINT;  
 THENCE S 41°19'46" E 67.72' TO A POINT;  
 THENCE S 42°53'58" E 1512.79' TO A POINT;  
 THENCE S 60°52'59" W 1052.39' TO A POINT;  
 THENCE S 08°41'38" E 179.26' TO A POINT;  
 THENCE S 81°03'00" W 1635.56' TO A POINT;  
 THENCE S 81°42'48" W 1209.14' TO A POINT;  
 THENCE S 81°23'47" W 592.92' TO A POINT;  
 THENCE N 08°12'28" W 656.46' TO A POINT;  
 THENCE N 02°27'38" W 262.77' TO A POINT;

THENCE N 22°20'43" E 272.33' TO A POINT;  
 THENCE N 26°13'12" W 177.40' TO A POINT;  
 THENCE N 29°49'46" W 209.92' TO A POINT;  
 THENCE N 43°49'13" W 139.84' TO A POINT;  
 THENCE N 09°22'07" W 902.98' TO A POINT;  
 THENCE N 00°10'48" E 437.28' TO A POINT;  
 THENCE N 80°26'18" W 705.81' TO A POINT;  
 THENCE S 06°23'25" W 2598.02' TO A POINT;  
 THENCE N 51°44'50" W 478.08' TO A POINT;  
 THENCE N 51°15'08" W 196.73' TO A POINT;  
 THENCE N 48°19'34" W 801.88' TO A POINT;  
 THENCE N 40°08'02" W 1459.18' TO A POINT;  
 THENCE N 39°34'14" W 778.97' TO A POINT;  
 THENCE N 38°44'41" W 695.20' TO A POINT;  
 THENCE N 36°06'10" W 337.41' TO A POINT;  
 THENCE N 15°52'59" W 389.51' TO A POINT;  
 THENCE N 14°03'38" E 1733.84' TO A POINT;  
 THENCE N 16°06'04" E 49.53' TO A POINT;  
 THENCE S 86°16'49" E 1324.67' TO A POINT;  
 THENCE N 15°37'31" W 303.25' TO A POINT;  
 THENCE N 16°46'41" E 182.52' TO A POINT;  
 THENCE S 75°54'38" E 94.31' TO A POINT;  
 THENCE N 34°58'35" E 2169.96' TO A POINT;  
 THENCE N 55°32'55" W 8.82' TO A POINT;

POINT BEING A POINT OF CURVATURE, NON-TANGENT; THENCE RUNNING ALONG A CURVE TO THE RIGHT, AN ARC LENGTH OF 101.09', WITH A RADIUS OF 740.71', A DELTA ANGLE OF 07°49'11", AND A CHORD BEARING AND DISTANCE OF N 59°26'09" W, 101.01 TO A POINT;

THENCE N 55°31'34" W 372.34' TO A POINT;  
 THENCE N 53°52'51" W 230.50' TO A POINT;  
 THENCE N 54°17'53" W 490.56' TO A POINT;  
 THENCE N 54°34'13" W 248.50' TO A POINT;  
 THENCE N 55°59'35" W 353.52' TO A POINT;  
 THENCE N 55°43'38" W 256.17' TO A POINT;  
 THENCE N 55°06'55" W 250.00' TO A POINT;  
 THENCE N 56°07'09" W 195.58' TO A POINT;  
 THENCE N 56°17'07" W 183.33' TO A POINT;  
 THENCE N 56°00'08" W 695.06' TO A POINT;  
 THENCE N 56°51'39" W 415.64' TO A POINT;  
 THENCE N 56°27'19" W 125.96' TO A POINT;

POINT BEING A POINT OF CURVATURE; THENCE RUNNING ALONG A CURVE TO THE RIGHT, AN ARC LENGTH OF 84.12', WITH A RADIUS OF 251.66', A DELTA ANGLE OF 19°09'05", AND A CHORD BEARING AND DISTANCE OF N 46°52'47" W, 83.73 TO A POINT;

THENCE N 37°18'15" W 109.06' TO A POINT;  
 THENCE N 38°39'35" W 164.85' TO A POINT;

POINT BEING A POINT OF CURVATURE; THENCE RUNNING ALONG A CURVE TO THE LEFT, AN ARC LENGTH OF 54.11', WITH A RADIUS OF 124.44', A DELTA ANGLE OF 24°54'49", AND A CHORD BEARING AND DISTANCE OF N 51°07'00" W, 53.68 TO A POINT;

THENCE N 63°34'24" W 71.35' TO A POINT;  
THENCE N 65°56'59" W 266.99' TO A POINT;  
THENCE N 65°45'26" W 703.65' TO A POINT;  
THENCE N 65°16'02" W 350.86' TO A POINT;  
THENCE N 66°04'15" W 388.81' TO THE POINT OF BEGINNING,  
CONTAINING 3130.20 ACRES OF LAND MORE OR LESS.

## Sector D4-C1

COMMENCING AT A POINT, SAID POINT BEING AT THE INTERSECTION OF CLUBHOUSE ROAD AND DELEMAR HIGHWAY; THENCE DEPARTING SAID POINT AND CONTINUING N 34°51'05" E 11676.15' TO THE TRUE POINT OF BEGINNING [N 382,085.72, E 2,225,029.41]; THENCE DEPARTING SAID POINT OF BEGINNING AND CONTINUING ON THE FOLLOWING COURSES AND DISTANCES:

POINT BEING A POINT OF CURVATURE, THENCE RUNNING ALONG A CURVE TO THE LEFT, A ARC LENGTH OF 166.12', WITH A RADIUS OF 3335.15', A DELTA ANGLE OF 02°51'14", AND A CHORD BEARING AND DISTANCE OF N 16°57'14" E, 166.10 TO A POINT;

THENCE N 15°31'37" E 436.41' TO A POINT;  
 THENCE N 74°28'23" W 16.98' TO A POINT;  
 THENCE N 15°31'48" E 5189.01' TO A POINT;  
 THENCE S 74°28'12" E 17.00' TO A POINT;  
 THENCE N 15°31'48" E 170.07' TO A POINT;

POINT BEING A POINT OF CURVATURE; THENCE RUNNING ALONG A CURVE TO THE RIGHT, AN ARC LENGTH OF 274.20', WITH A RADIUS OF 1859.86', A DELTA ANGLE OF 08°26'50", AND A CHORD BEARING AND DISTANCE OF N 19°45'13" E, 273.95 TO A POINT;

THENCE N 75°45'47" E 136.66' TO A POINT;  
 THENCE S 66°45'00" E 1717.26' TO A POINT;  
 THENCE S 55°08'27" E 613.57' TO A POINT;  
 THENCE S 30°06'23" E 845.31' TO A POINT;  
 THENCE S 69°22'02" E 752.74' TO A POINT;  
 THENCE S 26°16'45" E 1866.52' TO A POINT;  
 THENCE S 29°41'26" W 965.93' TO A POINT;  
 THENCE N 85°59'29" W 1890.36' TO A POINT;  
 THENCE S 37°06'15" W 2037.51' TO A POINT;  
 THENCE S 03°48'51" E 626.39' TO A POINT;  
 THENCE S 14°59'42" W 1195.89' TO A POINT;  
 THENCE N 48°31'00" W 125.69' TO A POINT;  
 THENCE N 42°44'32" W 253.11' TO A POINT;  
 THENCE N 33°21'59" W 125.38' TO A POINT;  
 THENCE N 49°57'48" W 17.14' TO A POINT;  
 THENCE N 66°48'04" W 99.29' TO A POINT;  
 THENCE N 74°23'15" W 174.28' TO A POINT;  
 THENCE N 77°35'42" W 106.41' TO A POINT;  
 THENCE N 60°23'44" W 58.67' TO A POINT;  
 THENCE N 50°11'40" W 107.68' TO A POINT;  
 THENCE N 44°13'37" W 260.36' TO A POINT;  
 THENCE N 44°42'37" W 941.43' TO A POINT;  
 THENCE N 43°24'26" W 453.31' TO THE POINT OF BEGINNING,  
 CONTAINING 516.53 ACRES OF LAND MORE OR LESS.

**Exhibit "A-1(2)"**

Amended Maps Depicting Portions of the Property

*[See Attached]*

LEGAL DESCRIPTION

PART 1 (CONTINUED)

LEGAL DESCRIPTION PART 1 (CONTINUED)
THENCE S 20°25'41" E 153.87' TO A POINT...

PART 2

PART 2
COMMENCING AT A CORNER OF PART 1, LAND...

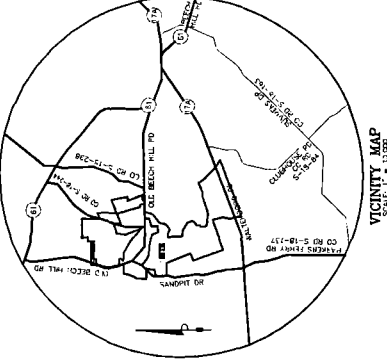
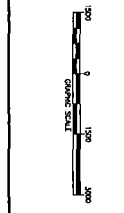


EXHIBIT SHOWING
A PORTION OF TMS# 140-00-00-038 &
148-00-00-012
AREA D3A RESUBAL

NOTE:
1. THIS MAP/PLAN IS TO BE USED IN THE RESUBAL OF LAND...

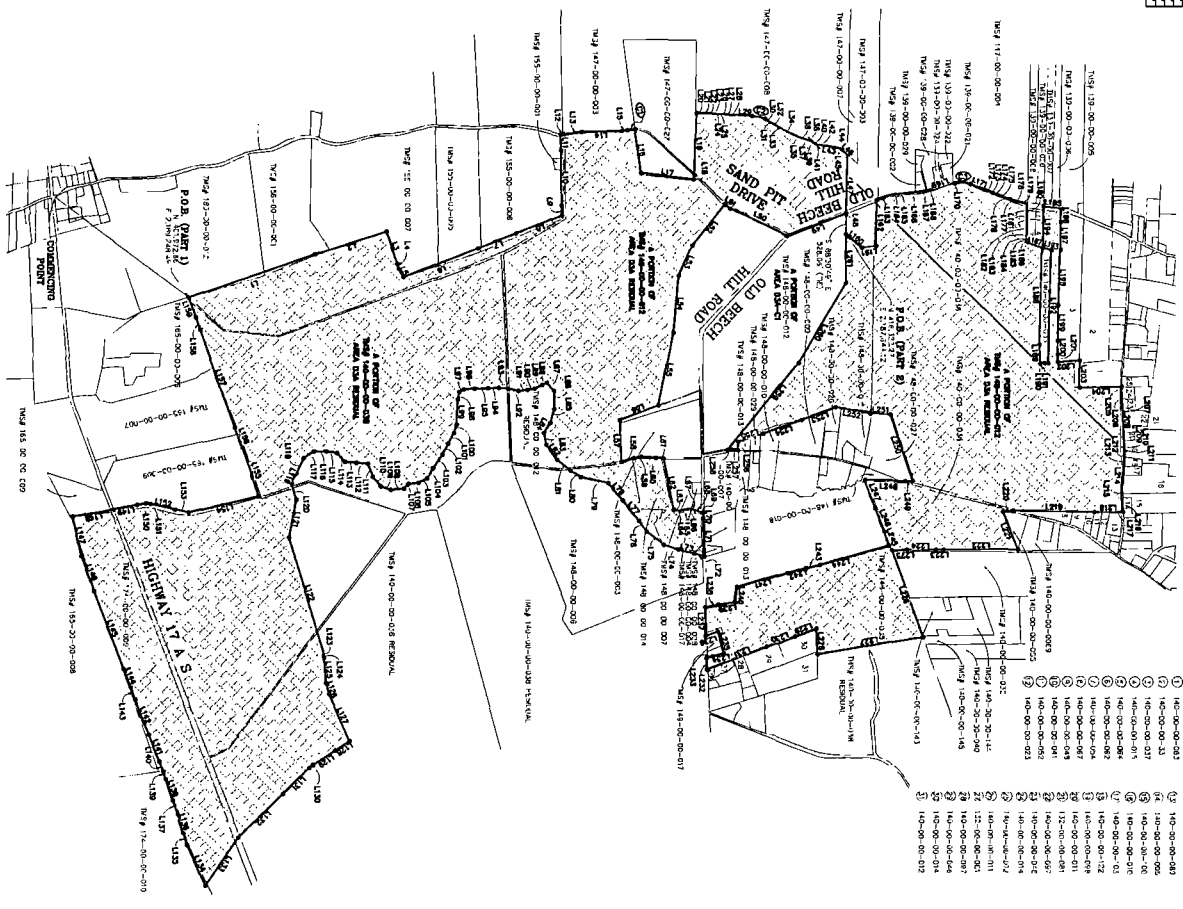
COUNTY PROJECT NUMBER
SUNDERVILLE, BONDICHER COUNTY, SOUTH CAROLINA

PLAN STATUS
DATE DESCRIPTION
JOB No. 4878-01-018



**CURVE TABLE**

NO.	START	END	ANGLE	LENGTH	BEARING	BEARING	BEARING	BEARING	BEARING	BEARING	BEARING
1	117.00	117.00	90	100.00	S 00° 00' 00" W	N 00° 00' 00" E	N 00° 00' 00" E	N 00° 00' 00" E	N 00° 00' 00" E	N 00° 00' 00" E	N 00° 00' 00" E



**LANE TABLE**

NO.	SECTION	TOWNSHIP	RANGE	AREA	ACRES	SECTION	TOWNSHIP	RANGE	AREA	ACRES
1										
2										
3										
4										
5										
6										
7										
8										
9										
10										
11										
12										
13										
14										
15										
16										
17										
18										
19										
20										
21										
22										
23										
24										
25										
26										
27										
28										
29										
30										
31										
32										
33										

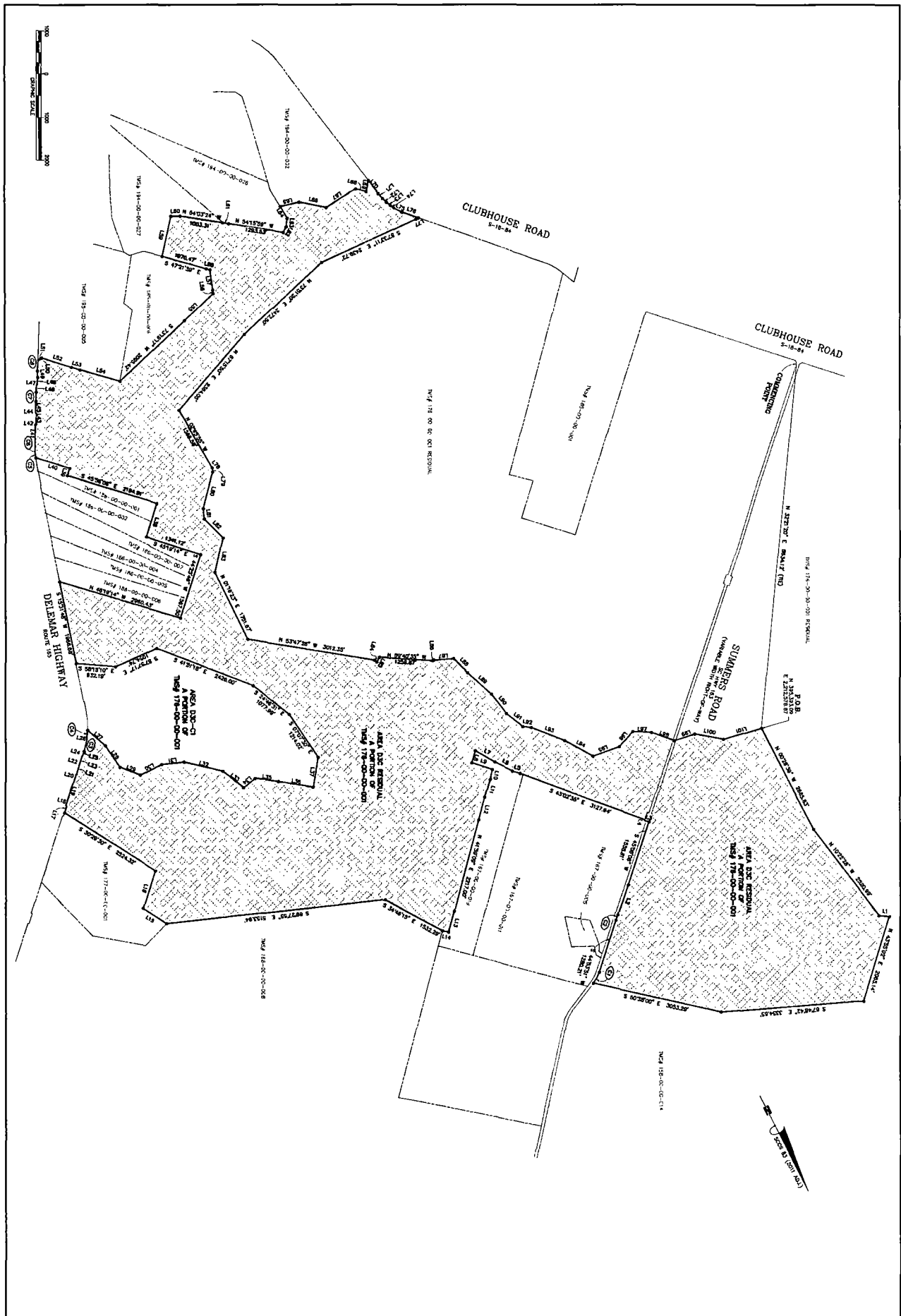
SHEET **2** OF **2**

EXHIBIT SHOWING  
**A PORTION OF TMS# 140-00-00-038 & 148-00-00-012**  
**AREA D3A RESIDUAL**  
 SUMMERVILLE, DORCHESTER COUNTY, SOUTH CAROLINA

**NOTE:**  
 1. THIS MAP/PLAT IS NOT THE RESULT OF A LAND SURVEY AND IS NOT INTENDED TO BE USED IN THE TRANSFER OF LAND.  
 2. THIS MAP/PLAT IS A SURVEY MAP AND DOES NOT CONSTITUTE A TITLE RECORD AND SHOULD NOT BE USED TO ESTABLISH A TITLE RECORD.  
 3. THE EXISTENCE OF ANY AND ALL RESTRICTIONS ON THE PROPERTY.  
 4. PROPERTY LINES PROVIDED BY DORCHESTER COUNTY PARCEL DATABASE (CAD).  
 5. THE ENGINEER/SURVEYOR DOES NOT ATTEMPT TO SUPPORT ANY PROPERTY OWNER THAN PROPERTY OWNED BY SUMMERVILLE LAND PARTNERS, LLC OR ANY LAST ESTATE SURVIVOR.  
**Bowman**  
 Surveying & Mapping, LLC  
 1207 Poplar Avenue  
 Charleston, SC 29403  
 803-799-0800  
 www.bowmansurvey.com







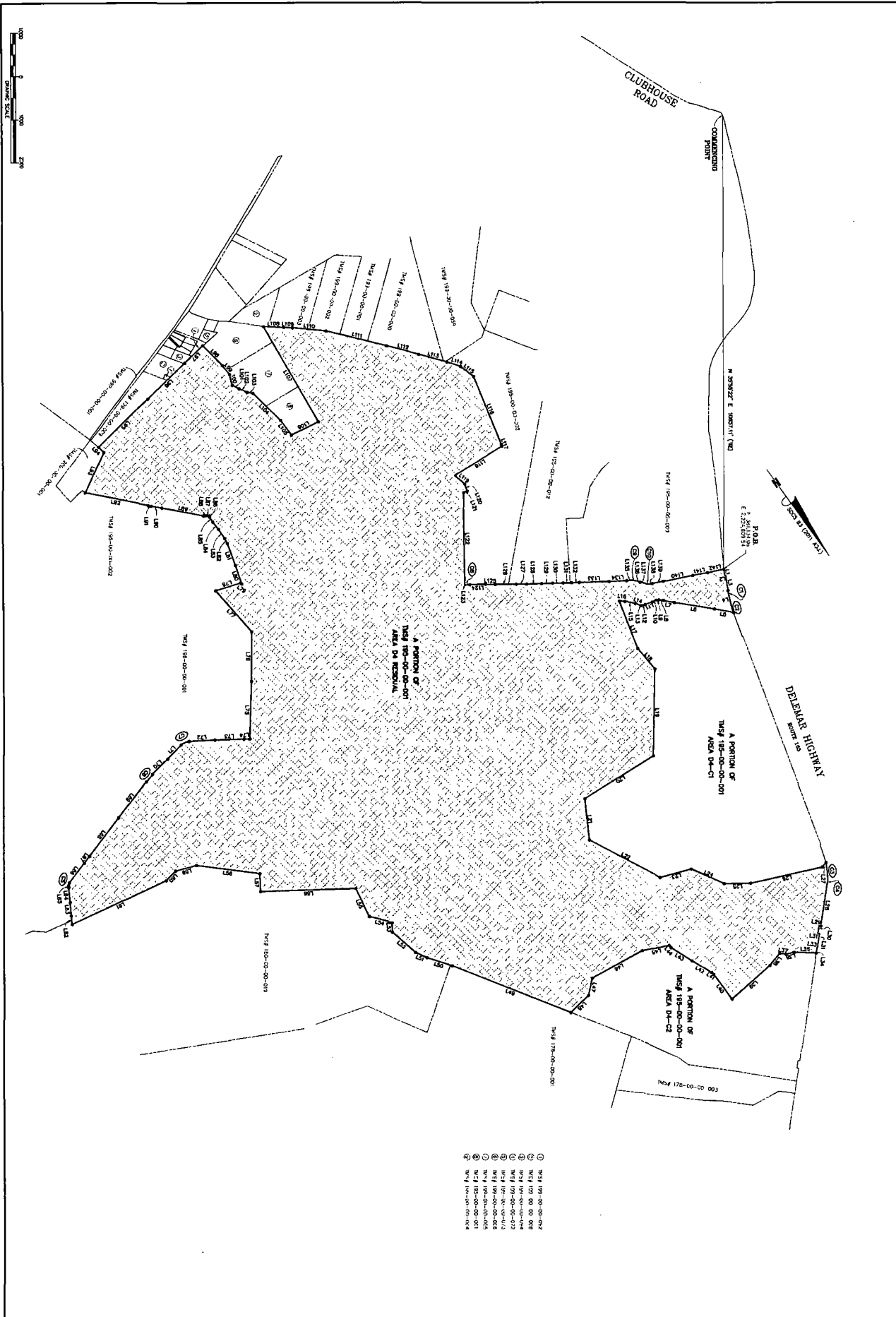
DATE	DESCRIPTION
PK	IR
TECH.	CRANNI
SCALE	1" = 100'
CDI NO.	4878-01-018
DATE	03/28/2018
FILE NO.	4878-01-018-010

EXHIBIT SHOWING  
 A PORTION OF TMS# 176-00-00-001 AND  
 TMS# 177-00-00-002  
 ---  
**AREA D3C RESIDUAL**  
 ---  
 SUMMERVILLE, DORCHESTER COUNTY, SOUTH CAROLINA

**NOTE:**  
 1. THIS MAP/PLAN IS NOT THE RESULT OF A LAND SURVEY AND IS NOT INTENDED TO BE USED IN THE TRANSFER OF TITLE TO PROPERTY.  
 2. TAX MAPS 176-00-00-001 AND 177-00-00-002  
 3. THIS MAP HAS NOT BEEN RECORDED IN THE PUBLIC RECORDS OF THE COUNTY OF DORCHESTER, SOUTH CAROLINA. THE EXISTENCE OF ANY AND ALL RESTRICTIONS ON THE PROPERTY.  
 4. PROPERTY LINES PROVIDED BY DORCHESTER COUNTY PARCEL DATABASE (CPD).  
 5. THE DORCHESTER COUNTY PARCEL DATABASE IS NOT INTENDED TO BE USED IN THE TRANSFER OF TITLE TO PROPERTY OR IN ANY OTHER MANNER THAT MAY BE IN VIOLATION OF ANY APPLICABLE LAWS OR REGULATIONS.  
 6. DORCHESTER COUNTY PARCEL DATABASE (CPD) IS A SERVICE PROVIDED BY DORCHESTER COUNTY, SOUTH CAROLINA.







- ① 195-00-00-00-002
- ② 195-00-00-00-003
- ③ 195-00-00-00-004
- ④ 195-00-00-00-005
- ⑤ 195-00-00-00-006
- ⑥ 195-00-00-00-007
- ⑦ 195-00-00-00-008
- ⑧ 195-00-00-00-009
- ⑨ 195-00-00-00-010
- ⑩ 195-00-00-00-011
- ⑪ 195-00-00-00-012
- ⑫ 195-00-00-00-013
- ⑬ 195-00-00-00-014
- ⑭ 195-00-00-00-015
- ⑮ 195-00-00-00-016
- ⑯ 195-00-00-00-017
- ⑰ 195-00-00-00-018
- ⑱ 195-00-00-00-019
- ⑲ 195-00-00-00-020
- ⑳ 195-00-00-00-021
- ㉑ 195-00-00-00-022
- ㉒ 195-00-00-00-023
- ㉓ 195-00-00-00-024
- ㉔ 195-00-00-00-025
- ㉕ 195-00-00-00-026
- ㉖ 195-00-00-00-027
- ㉗ 195-00-00-00-028
- ㉘ 195-00-00-00-029
- ㉙ 195-00-00-00-030
- ㉚ 195-00-00-00-031
- ㉛ 195-00-00-00-032
- ㉜ 195-00-00-00-033
- ㉝ 195-00-00-00-034
- ㉞ 195-00-00-00-035
- ㉟ 195-00-00-00-036
- ㊱ 195-00-00-00-037
- ㊲ 195-00-00-00-038
- ㊳ 195-00-00-00-039
- ㊴ 195-00-00-00-040
- ㊵ 195-00-00-00-041
- ㊶ 195-00-00-00-042
- ㊷ 195-00-00-00-043
- ㊸ 195-00-00-00-044
- ㊹ 195-00-00-00-045
- ㊺ 195-00-00-00-046
- ㊻ 195-00-00-00-047
- ㊼ 195-00-00-00-048
- ㊽ 195-00-00-00-049
- ㊾ 195-00-00-00-050
- ㊿ 195-00-00-00-051

PLAN STATUS	
DATE	DESCRIPTION
ISS	REV
TRK	BY
SCALE	H. 1" = 100.00'
DATE	07/29/2014
FILE NO.	4878-D-MP-009-2
SHEET 1 OF 2	

EXHIBIT SHOWING  
**A PORTION OF TMS# 195-00-00-001**  
 ---  
**AREA D4 RESIDUAL**  
 ---  
 SUMMERVILLE, DORCHESTER COUNTY, SOUTH CAROLINA

**NOTE:**

1. THIS MAP/EXHIBIT IS NOT THE RESULT OF A LAID SURVEY AND IS NOT INTENDED TO BE USED IN THE TRANSFER OF TITLE TO ANY PROPERTY.
2. THIS MAP IS FOR INFORMATIONAL PURPOSES ONLY AND DOES NOT NECESSARILY INDICATE THE EXISTENCE OF ANY AND ALL RESTRICTIONS ON THE PROPERTY.
3. PROPERTY LINES PROVIDED BY DORCHESTER COUNTY PARCEL DATABASE (CDIS).
4. THIS MAP IS NOT TO BE USED AS A BASIS FOR ANY PROPERTY DIVISION OR ANY OTHER TRANSACTION WITHOUT THE ASSISTANCE OF AN ATTORNEY AT LAW.

**Bowman**  
 SURVEYING & CONSULTING, LLC  
 1100 W. BROADWAY, SUITE 200  
 CHARLOTTE, NC 28202  
 PH: 704.375.1100  
 WWW.BOWMAN-SURVEYING.COM

LEGAL DESCRIPTION

POINT BEING A PORTION OF CONVALESCENT HOME-MADE... LEGAL DESCRIPTION CONTINUED

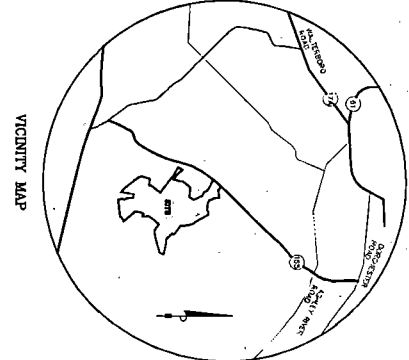
LEGAL DESCRIPTION CONTINUED

THENCE 5 37' 32" S 11 21' 24" E 112.48' TO A POINT... LEGAL DESCRIPTION CONTINUED

LINE TABLE

Table with columns: LINE NO, BEARING, DISTANCE, POINT NO. Lists survey data for various points.

Table with columns: LINE NO, BEARING, DISTANCE, POINT NO. (continued or summary data).



CURVE TABLE providing data for curved segments of the survey, including stationing and curve parameters.

EXHIBIT SHOWING A PORTION OF TMS# 195-00-00-001 AREA D4 RESIDUAL SUMMERVILLE, DORCHESTER COUNTY, SOUTH CAROLINA

NOTE: 1. THIS MAP AND INSTRUMENT IS NOT THE RESULT OF A LAND SURVEY... 2. THIS MAP IS NOT INTENDED TO BE USED IN THE MANNER OF A...

Administrative information block including 'COUNTY PROJECT NUMBER', 'DATE', 'SCALE', and 'SHEET 2 OF 2'.

