

MCMILLAN

. TREE FARM .

MCMILLAN TREE FARM TRACT 5 - PRICE REDUCED

Bamberg County | 404.52 acres | \$2,300 per acre

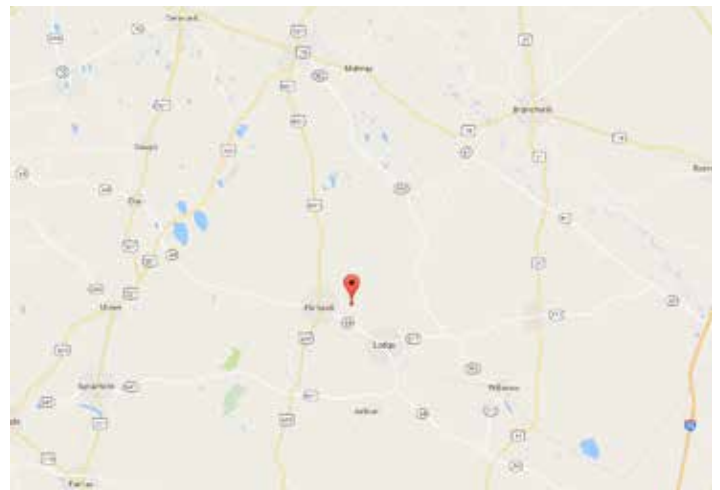
Description

McMillan Tree Farm Tract 5 is the main tract of an established tree farm operation. Currently stocked with live oak, holly, ligustrum, crape myrtle, and willow oak, the property offers the new owner a return on their investment. Part of the property is a loblolly pine plantation (est. 2013), while the remaining is mature pine/hardwood mix. The versatile property would make an exceptional private estate with plenty of room for horses, hunting, and recreation; two horse stables and a fenced-in pasture round out the offerings of this stunning tract.

Features

Located 1.5 miles northeast of Ehrhardt,, the property also boasts 3,800 feet of paved road frontage along Buttermilk road. Includes two large storage buildings and an office building.

Call 843-509-1034 today to schedule a tour of this unique and special property.

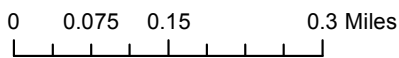
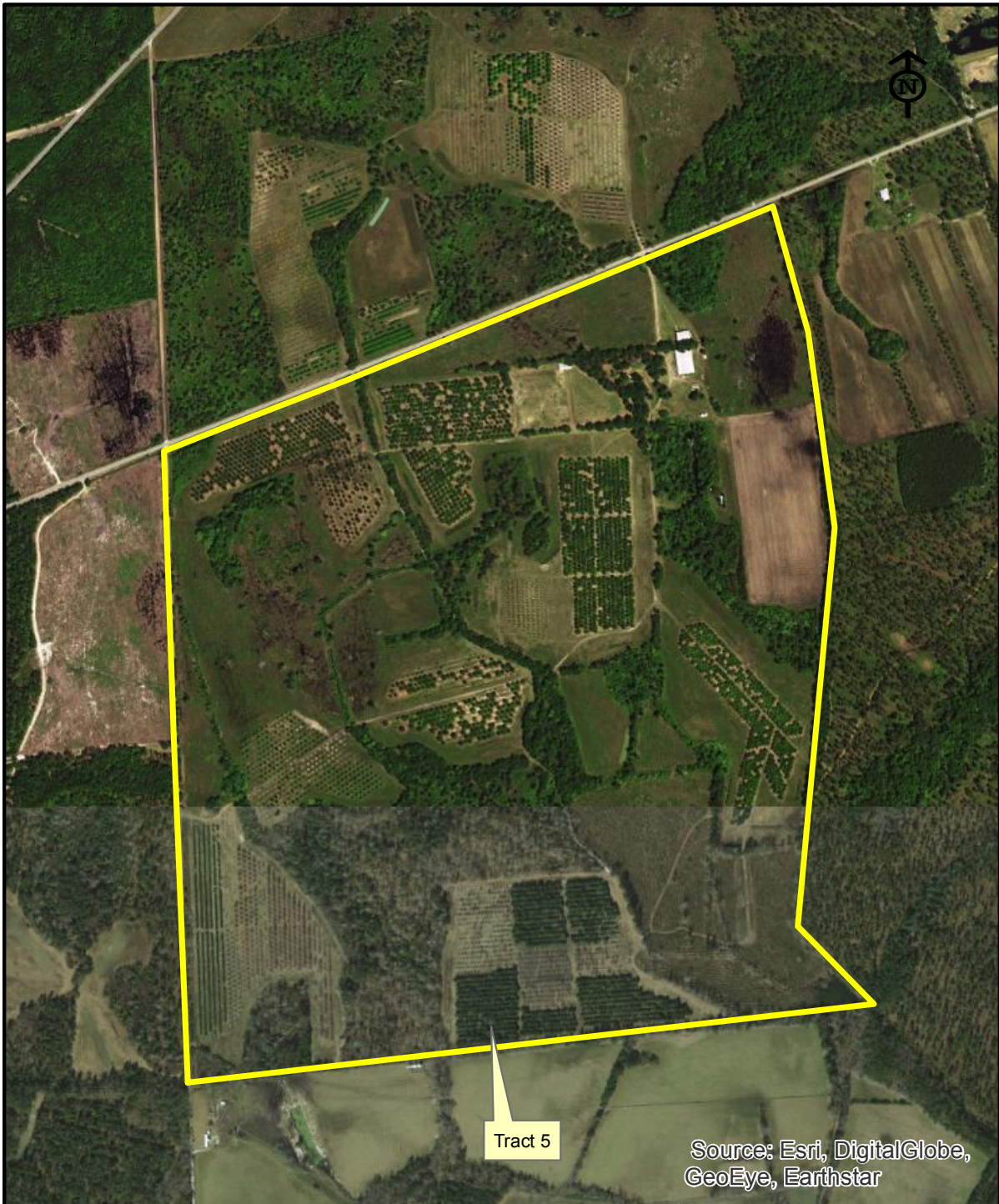


[See in Google Maps](#)



MCMILLAN TREE FARM TRACT 5 - AVAILABLE

Bamberg County | 404.52 acres | \$2,300 per acre



McMillan Tree Farm Tract 5
404.52 Acres
Bamberg County, SC

MCMILLAN TREE FARM TRACT 5 - AVAILABLE

Bamberg County | 404.52 acres | \$2,300 per acre



MCMILLAN TREE FARM TRACT 5 - AVAILABLE

Bamberg County | 404.52 acres | \$2,300 per acre



MCMILLAN TREE FARM TRACT 5 - AVAILABLE

Bamberg County | 404.52 acres | \$2,300 per acre



MCMILLAN TREE FARM TRACT 5 - AVAILABLE

Bamberg County | 404.52 acres | \$2,300 per acre



MCMILLAN TREE FARM TRACT 5 - AVAILABLE

Bamberg County | 404.52 acres | \$2,300 per acre



MCMILLAN TREE FARM TRACT 5 - AVAILABLE

Bamberg County | 404.52 acres | \$2,300 per acre

