

EAST EDISTO

RURAL DISTRICT

MAPLE STREET LOT - AVAILABLE

313 N. Maple Street, Summerville | 1.10 acres | \$200,000

Description

This valuable property is located in a very busy section of Summerville. There is approximately 270' of road frontage along Maple Street and approximately 175' feet of frontage along Elks Lodge Lane.

Features

Zoned Light Industrial

Tax Map ID: 1301300078.000



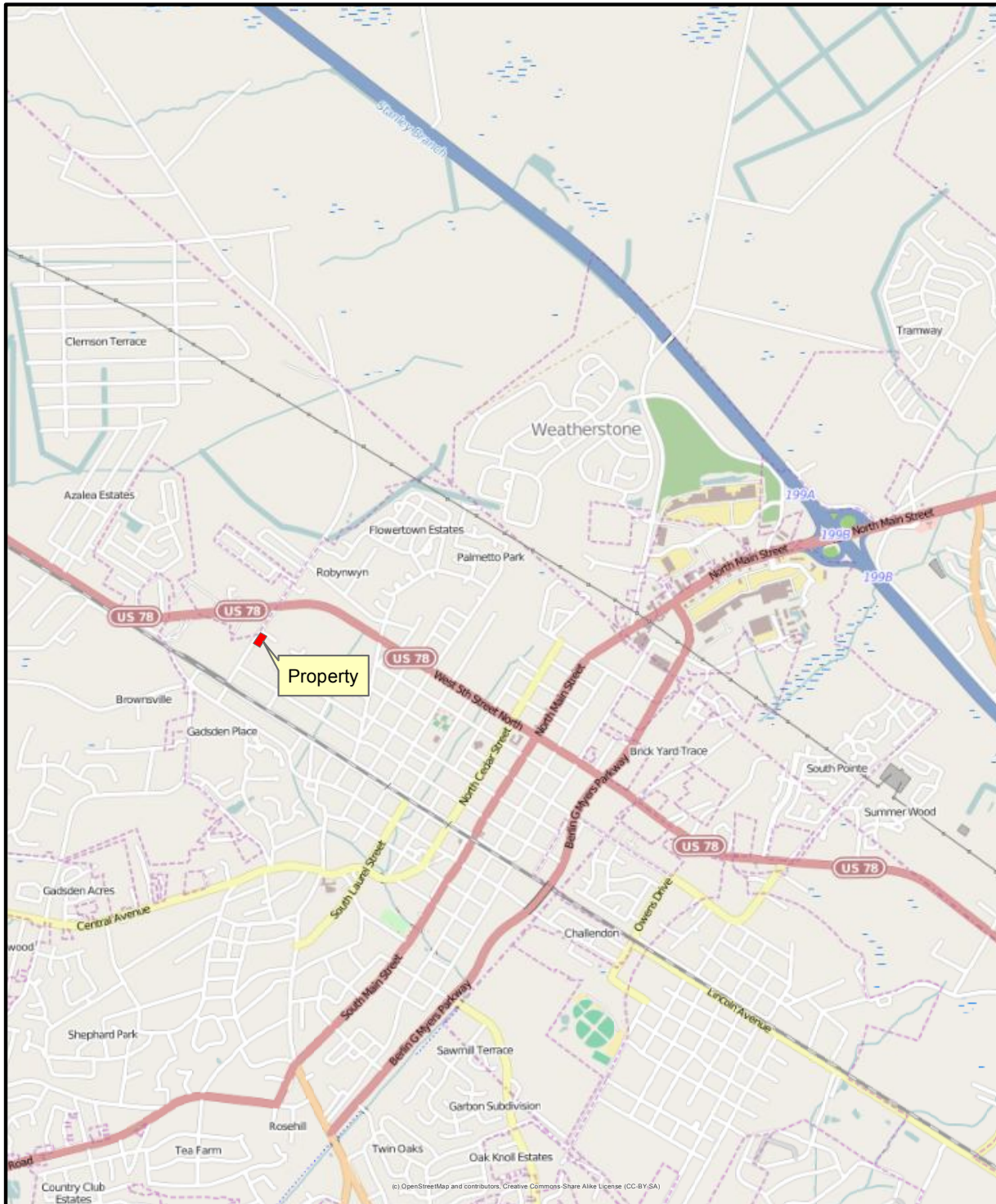
[See in Google Maps](#)



www.WestRockLandSales.com | 843-509-1034

MAPLE STREET LOT - AVAILABLE

313 N. Maple Street, Summerville | 1.10 acres | \$200,000



MeadWestvaco
Charleston Forest
Printed: 12/12/14
Data: 11/26/14

1 inch = 0.557 miles

1:35,322

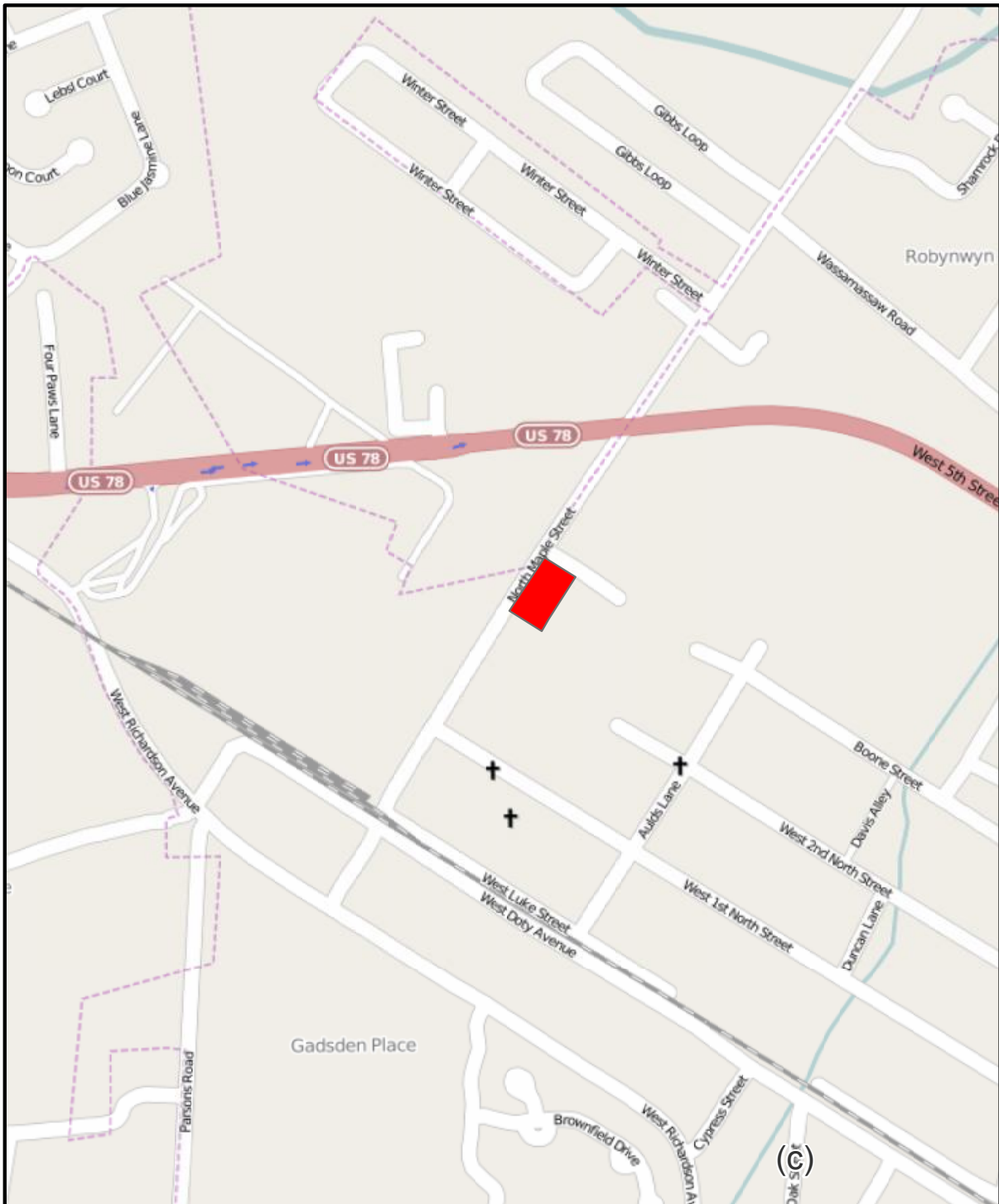
Maple Street Lot

1.1 acres +/-

313 Maple Street
Summerville, SC 29483

MAPLE STREET LOT - AVAILABLE

313 N. Maple Street, Summerville | 1.10 acres | \$200,000



MeadWestvaco
Charleston Forest
Printed: 12/12/14
Data: 11/26/14

1 inch = 0.112 miles
1:7,116

Maple Street Lot
1.1 acres +/-
313 Maple Street
Summerville, SC 29483