

# EAST EDISTO

RURAL DISTRICT

## JUDGE SMITH - PRICE REDUCED

Charleston County, SC | 60.00 acres | \$750,000

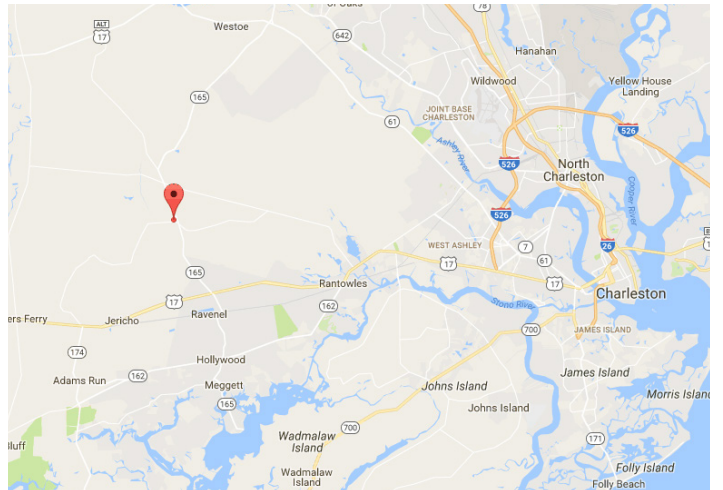
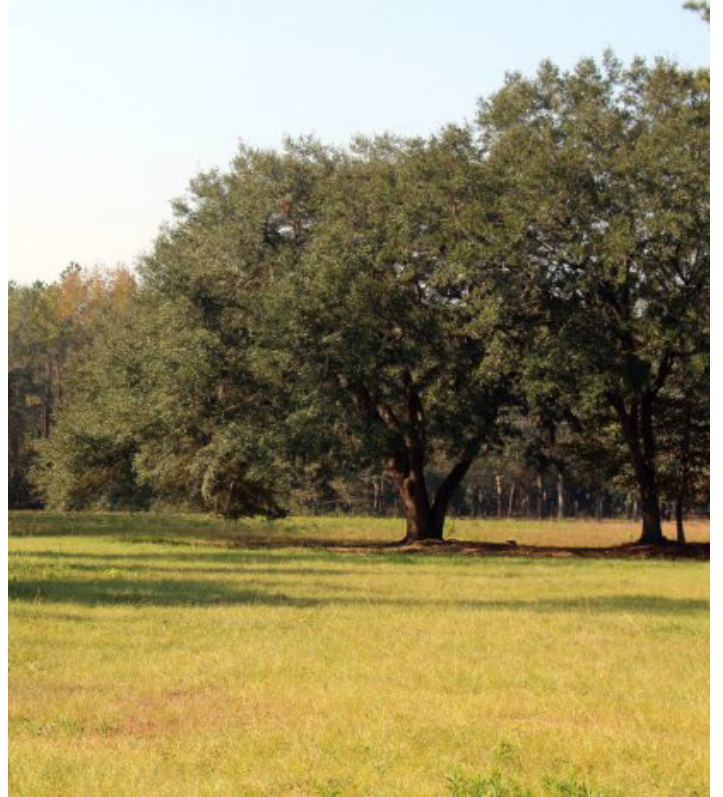
### Description

A small property with big potential, the location of the Judge Smith property is ideal, and the buildings that are in place make it immediately functional.

### Features

Judge Smith is practically surrounded by public road frontage....so access is great! Much of the property sits high on the landscape with the majority of it covered by a well stocked pine plantation. The balance of the property is in a large opening with multiple stands of mature natural timber. The north end has a large shed with four open bays with an additional bay entirely enclosed. There is an additional building with multiple rooms (complete with kitchen and bathroom), and a roll up door for the shop area.

This is a great opportunity to own a very valuable property in a great location within the prestigious East Edisto Rural District. Call today to schedule your tour.



[See in Google Maps](#)



# JUDGE SMITH - PRICE REDUCED

Charleston County, SC | 60.00 acres | \$750,000



Source: Esri, DigitalGlobe, GeoEye, Iacubed, Earthstar Geographics, CNES/Airbus DS, USDA, USGS, AEX, Getmapping, Aerogrid, IGN, IGP, swisstopo, and the GIS User Community, Esri, HERE, DeLorme, MapmyIndia, © OpenStreetMap contributors



0 0.125 0.25 0.5 Miles

Judge Smith  
60 GIS Acres  
Charleston County, SC

# JUDGE SMITH - PRICE REDUCED

Charleston County, SC | 60.00 acres | \$750,000



# JUDGE SMITH - PRICE REDUCED

Charleston County, SC | 60.00 acres | \$750,000

