

EAST EDISTO

RURAL DISTRICT

GOOD HOPE - PRICE REDUCED

Charleston County, SC | 226.00 acres | \$1,498,000

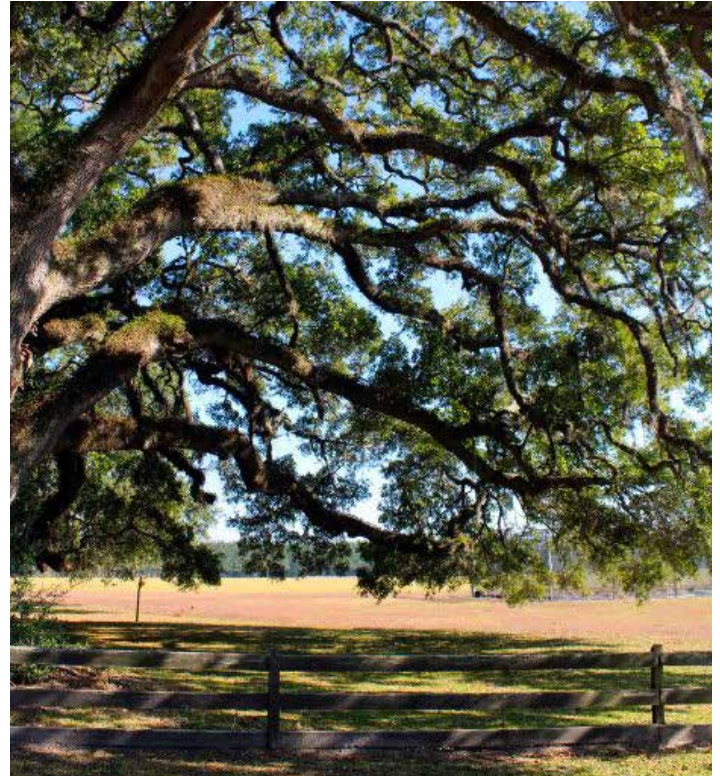
Description

Good Hope is a very special property located in the prestigious East Edisto Rural District. Most of the property sits atop a ridge. It has great character and diversity with open areas and heavily wooded areas alike. The property is in close proximity to Charleston, Summerville, and the Ace Basin... making it a great place to raise a family or conduct business.

Features

Good Hope features 71 acres of open fields, a 2.5 acre reservoir (stocked with fish), over 5,300 feet of Hyde Park Road frontage and over 1,700 feet of frontage along SC Hwy 165. The main entrance is graced with tremendous live oaks and there are multiple improvements/buildings on the property that are too numerous to list.

Opportunities to own a grand property like Good Hope are rare. Do not let this one get away! Call 843-509-1034 today to schedule a tour of this unique and special property.

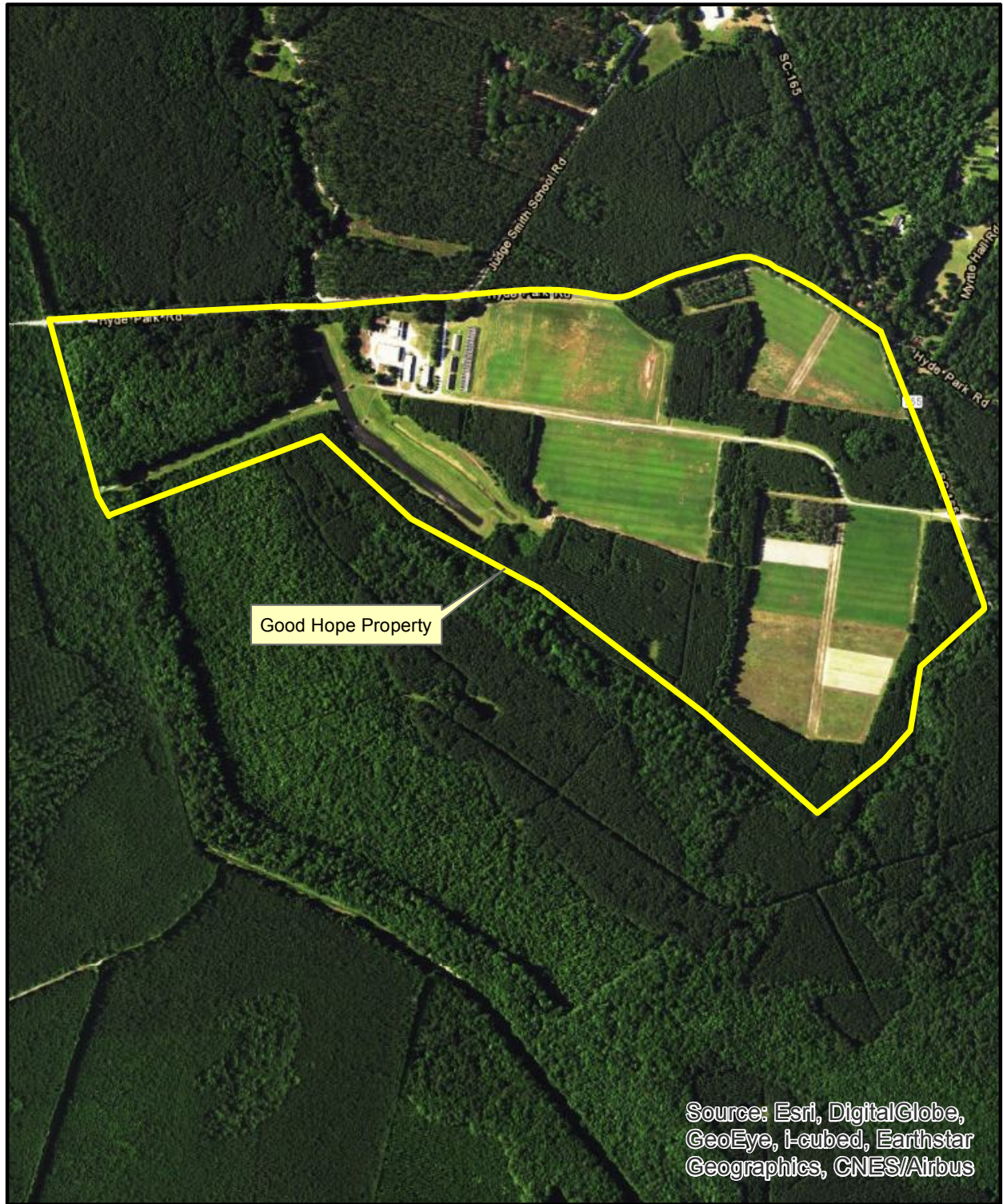


See in Google Maps



GOOD HOPE - PRICE REDUCED

Charleston County, SC | 226.00 acres | \$1,498,000



0 0.075 0.15 0.3 Miles

Good Hope
226 GIS Acres
Charleston County, SC

GOOD HOPE - PRICE REDUCED

Charleston County, SC | 226.00 acres | \$1,498,000



GOOD HOPE - PRICE REDUCED

Charleston County, SC | 226.00 acres | \$1,498,000



GOOD HOPE - PRICE REDUCED

Charleston County, SC | 226.00 acres | \$1,498,000



GOOD HOPE - PRICE REDUCED

Charleston County, SC | 226.00 acres | \$1,498,000



GOOD HOPE - PRICE REDUCED

Charleston County, SC | 226.00 acres | \$1,498,000



GOOD HOPE - PRICE REDUCED

Charleston County, SC | 226.00 acres | \$1,498,000



GOOD HOPE - PRICE REDUCED

Charleston County, SC | 226.00 acres | \$1,498,000



GOOD HOPE - PRICE REDUCED

Charleston County, SC | 226.00 acres | \$1,498,000

